


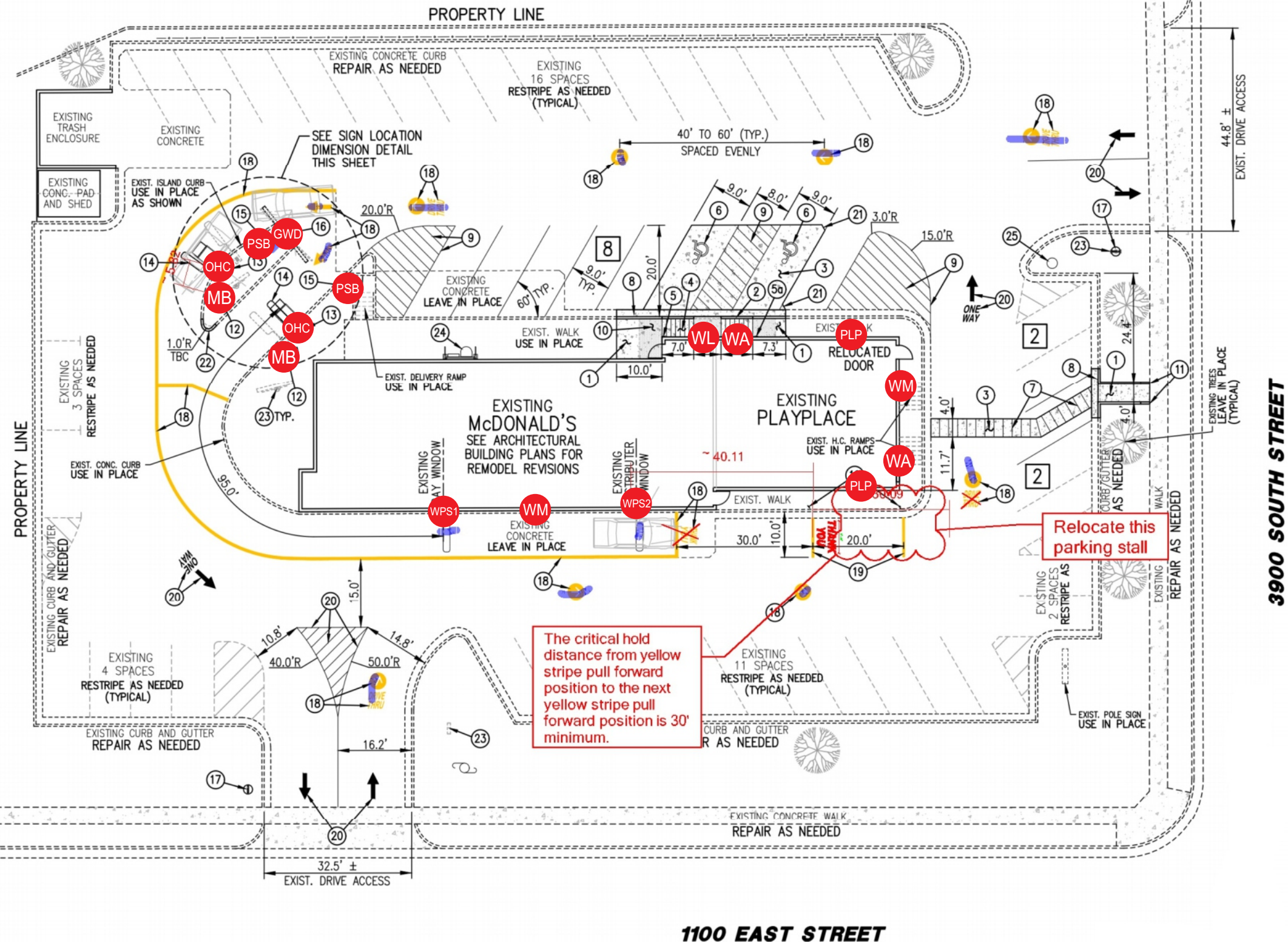


McDonald's

3890 SOUTH 1100 EAST - SALT LAKE CITY, UT

SIGN PROGRAM BOOK

Customer: MCDONALD'S	Date: 23MAR18	Prepared By: SC	Eng: -	<div>Note: Color output may not be exact when viewing or printing this drawing. All colors used are PMS or the closest CMYK equivalent. If these colors are incorrect, please provide the correct PMS match and a revision to this drawing will be made.</div>	<div>persona SIGNS LIGHTING IMAGE</div> <div>DISTRIBUTED BY SIGN UP COMPANY 700 21st Street Southwest PO Box 210 Watertown, SD 57201-0210 1.800.843.9888 • www.personasigns.com</div>
Location: SALT LAKE CITY, UT	File Name: 165905 - R1 - 3890 SOUTH 1100 EAST - SALT LAKE CITY, UT				



- PSB PRE-SELL BOARD (QTY 2)
- GWD DOUBLE ARM GATEWAY
- OHC ORDER HERE CANOPY (QTY 2)
- MB MENU BOARD (QTY 2)
- WPS1 WINDOW POSITION SIGN 1
- WPS2 WINDOW POSITION SIGN 2
- PLP 22" PLAYPLACE LETTERS (QTY 2)
- WA WALL ARCH (QTY 2)
- WM 24" WORDMARK (QTY 2)
- WL WELCOME LETTERS (QTY 1)

APPROVAL BOX - PLEASE INITIAL

CUSTOMER APPROVAL

Date

NOTE: Elevation drawings are for customer approval only, drawings are not to be used as any installation guide, all dimensions must be verified before installation.

Customer:
MCDONALD'S

Date:
23MAR18

Prepared By:	SC
--------------	----

Eng: **Note:** Color output may not be exact when viewing or printing this drawing. All colors used are PMS or the closest CMYK equivalent. If these colors are incorrect, please provide the correct PMS match and a revision to this drawing will be made.

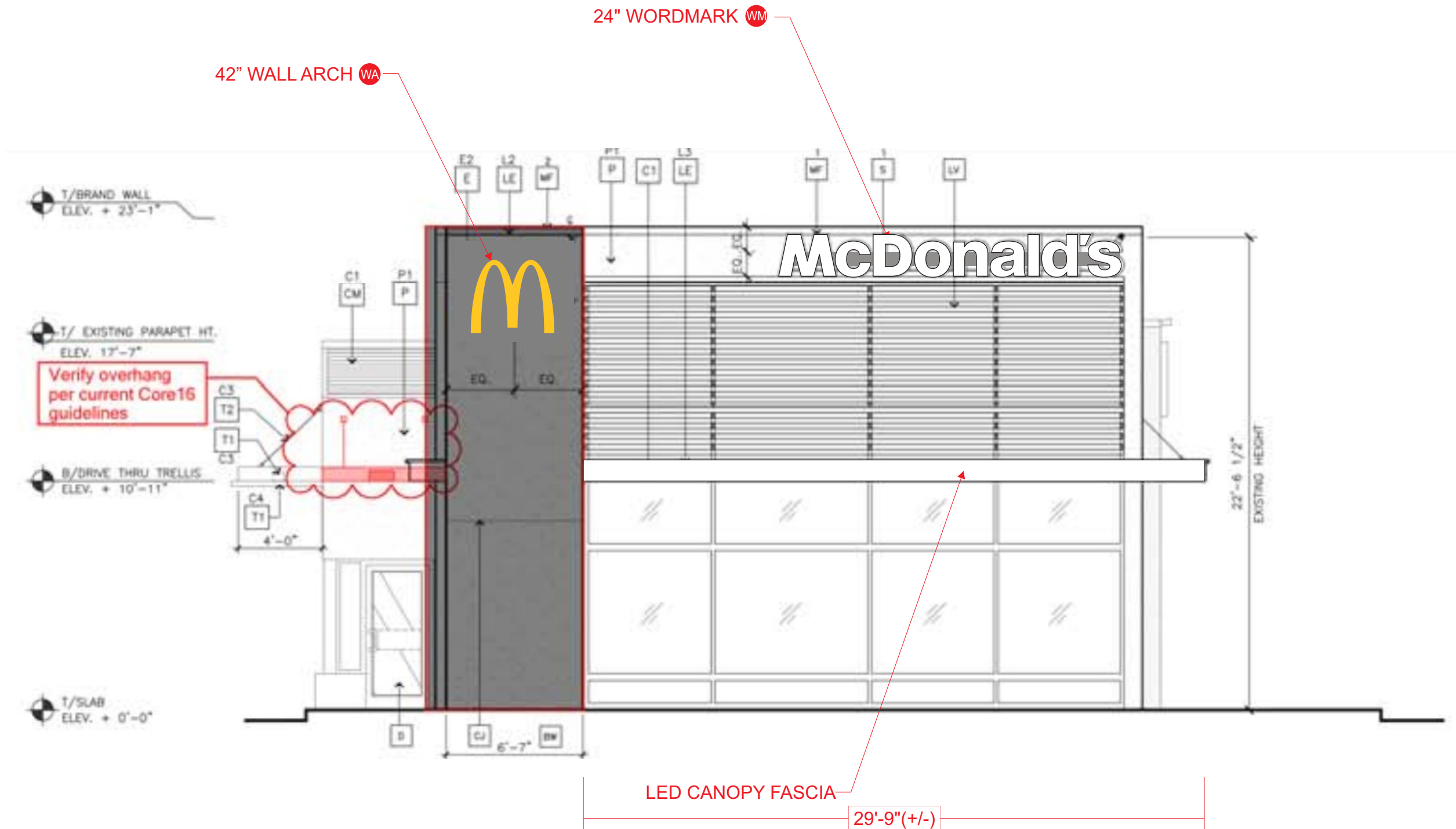
Location:
SALT LAKE CITY, UT

File Name:
165905 - R1 - 3890 SOUTH 1100 EAST - SALT LAKE CITY, UT

persóna
SIGNS | LIGHTING | IMAGE

DISTRIBUTED BY SIGN UP COMPANY
700 21st Street Southwest
PO Box 210
Watertown, SD 57201-0210
1.800.843.9888 • www.personasigns.com

SOUTH (FRONT) ELEVATION
SCALE: 3/16" = 1'-0"



APPROVAL BOX - PLEASE INITIAL		
CUSTOMER APPROVAL		Date

NOTE: Elevation drawings are for customer approval only, drawings are not to be used as any installation guide, all dimensions must be verified before installation.

Customer: MCDONALD'S	Date: 23MAR18	Prepared By: SC	Eng: -	<small>Note: Color output may not be exact when viewing or printing this drawing. All colors used are PMS or the closest CMYK equivalent. If these colors are incorrect, please provide the correct PMS match and a revision to this drawing will be made.</small>
Location: SALT LAKE CITY, UT	File Name: 165905 - R1 - 3890 SOUTH 1100 EAST - SALT LAKE CITY, UT			

persóna

SIGNS | LIGHTING | IMAGE

DISTRIBUTED BY SIGN UP COMPANY

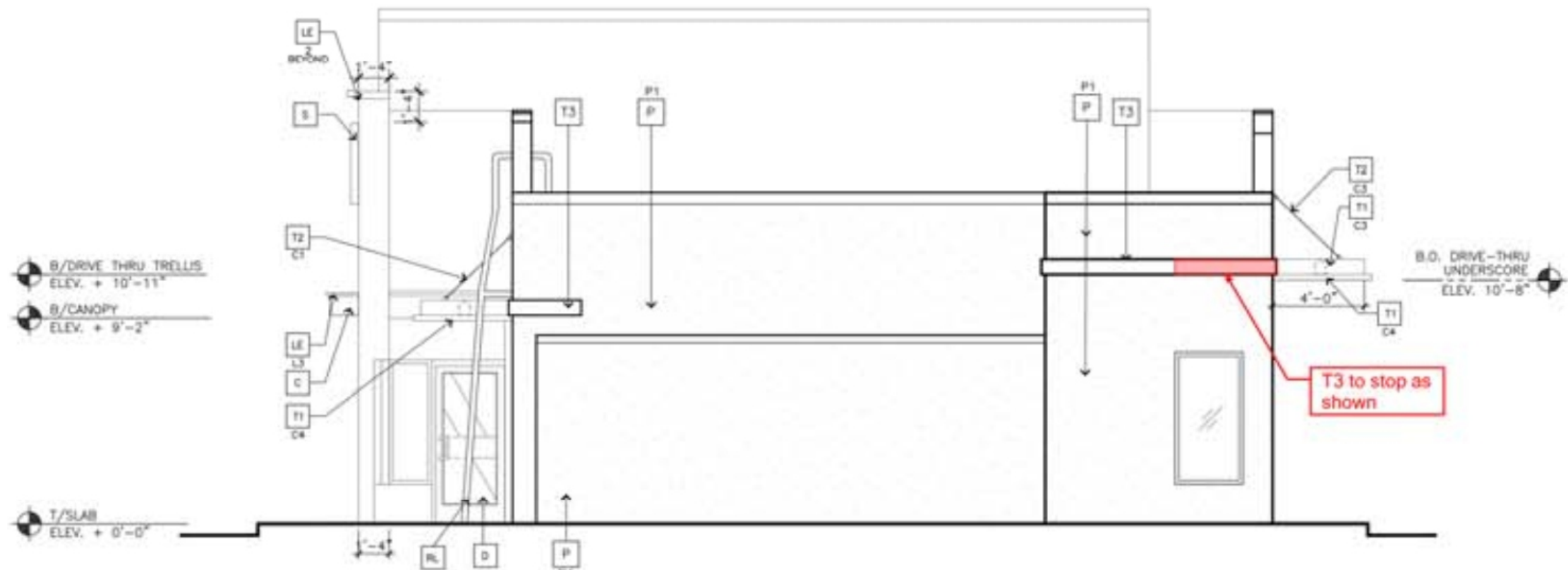
700 21st Street Southwest

P0 Box 210

Watertown, SD 57201-0210

1.800.843.9888 • www.personasigns.com


NORTH (REAR) ELEVATION
SCALE: 3/16" = 1'-0"



APPROVAL BOX - PLEASE INITIAL

CUSTOMER APPROVAL _____ Date _____

NOTE: Elevation drawings are for customer approval only, drawings are not to be used as any installation guide, all dimensions must be verified before installation.

Customer: MCDONALD'S	Date: 23MAR18	Prepared By: SC	Eng: -	<small>Note: Color output may not be exact when viewing or printing this drawing. All colors used are PMS or the closest CMYK equivalent. If these colors are incorrect, please provide the correct PMS match and a revision to this drawing will be made.</small>	 SIGNS LIGHTING IMAGE	DISTRIBUTED BY SIGN UP COMPANY 700 21st Street Southwest PO Box 210 Watertown, SD 57201-0210 1.800.843.9888 • www.personasigns.com
Location: SALT LAKE CITY, UT	File Name: 165905 - R1 - 3890 SOUTH 1100 EAST - SALT LAKE CITY, UT					

WEST (DRIVE-THRU) ELEVATION
SCALE: 1/8" = 1'-0"

24" WORDMARK WM

22" PLAY PLACE PP

WINDOW POSITION SIGN 1 WPS1

10"
3'-0"
Pay Here

playplace

LED CANOPY FASCIA

McDonald's

10"
3'-0"
Pick Up Here

Verify DT Dimensions
per current Core16
guidelines

WINDOW POSITION SIGN 2 WPS2

43'-11"(+/-)

APPROVAL BOX - PLEASE INITIAL

CUSTOMER APPROVAL

Date

NOTE: Elevation drawings are for customer approval only, drawings are not to be used as any installation guide, all dimensions must be verified before installation.

Customer:
MCDONALD'S

Date:
26MAR18

Prepared By:
SC/SC

Eng:
-

Note: Color output may not be exact when viewing or printing this drawing. All colors used are PMS or the closest CMYK equivalent. If these colors are incorrect, please provide the correct PMS match and a revision to this drawing will be made.

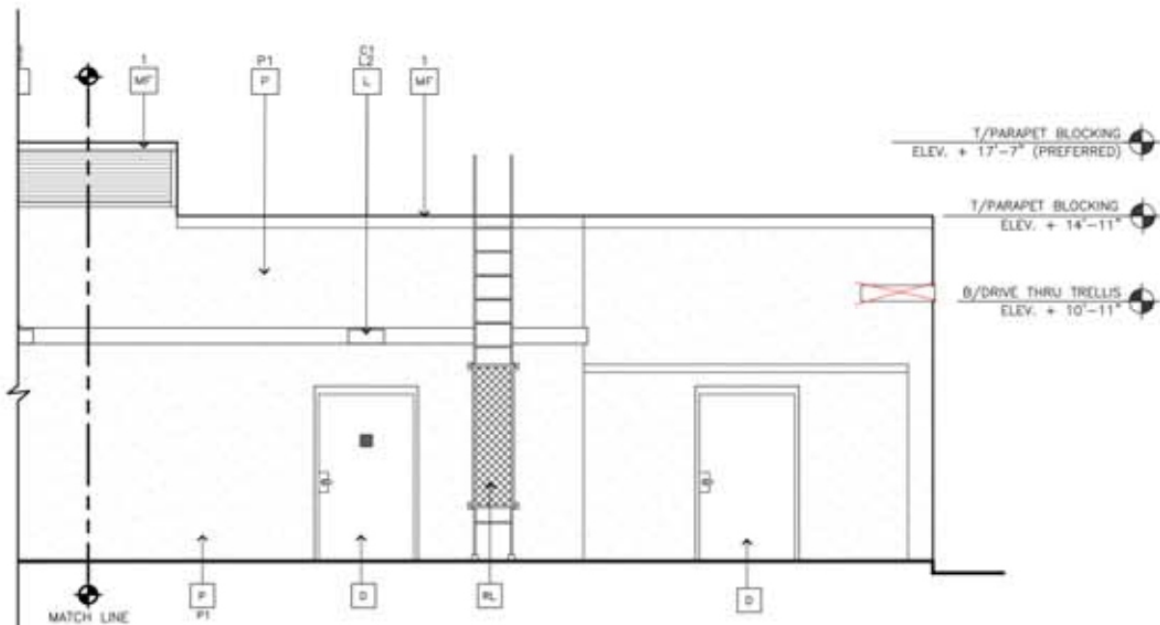
Location:
SALT LAKE CITY, UT

File Name:
165905 - R1 - 3890 SOUTH 1100 EAST - SALT LAKE CITY, UT

persona
SIGNS | LIGHTING | IMAGE

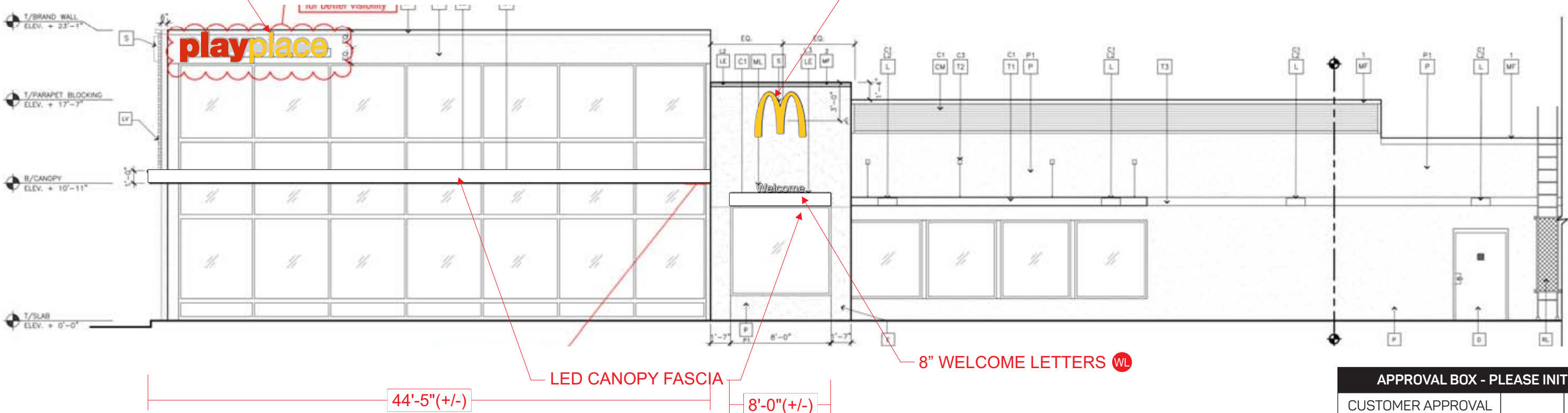
DISTRIBUTED BY SIGN UP COMPANY
700 21st Street Southwest
PO Box 210
Watertown, SD 57201-0210
1.800.843.9888 • www.personasigns.com

EAST (NON DRIVE-THRU) ELEVATION
SCALE: 1/8" = 1'-0"




22" PLAY PLACE PP

42" WALL ARCH WA



APPROVAL BOX - PLEASE INITIAL		
CUSTOMER APPROVAL		Date

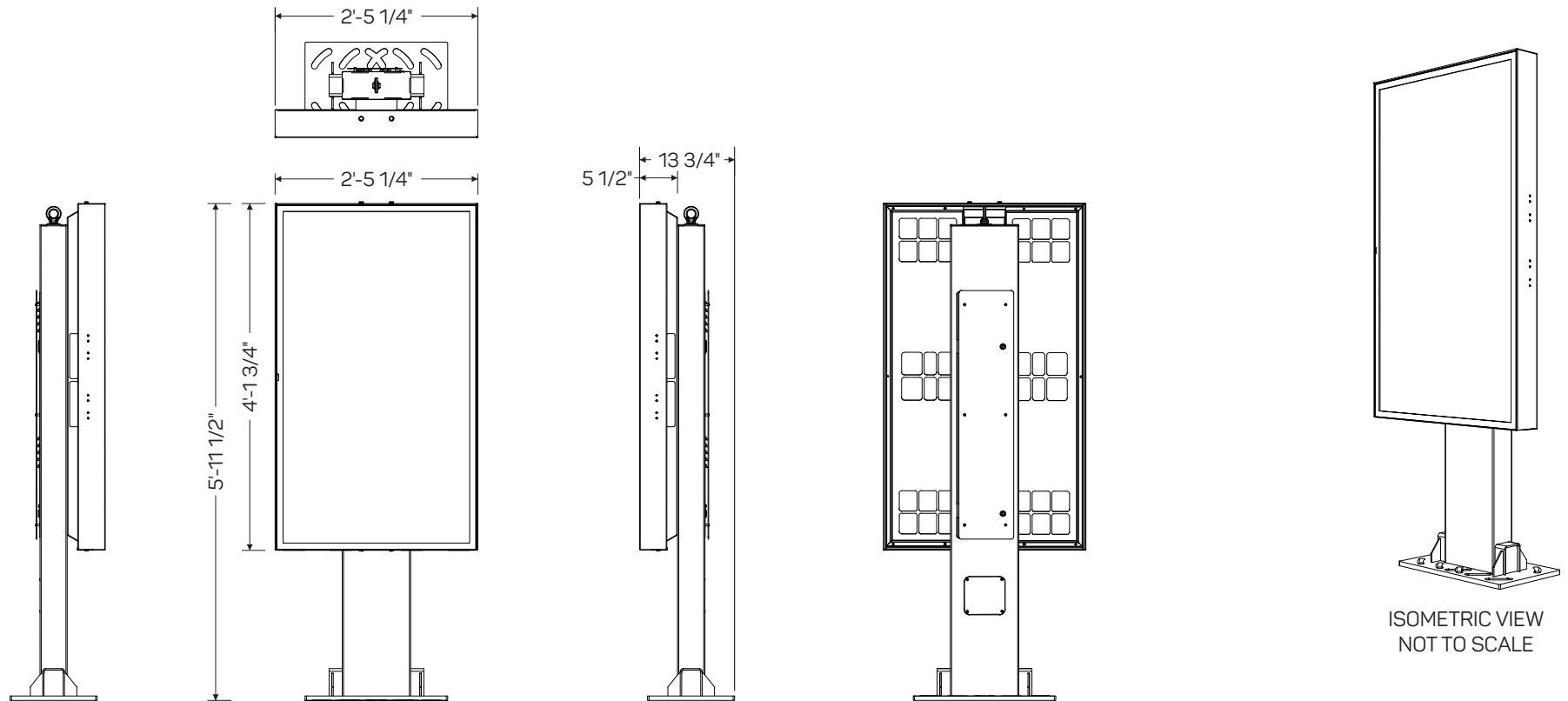
NOTE: Elevation drawings are for customer approval only, drawings are not to be used as any installation guide, all dimensions must be verified before installation.

Customer: MCDONALD'S	Date: 23MAR18	Prepared By: SC	Eng: -	Note: Color output may not be exact when viewing or printing this drawing. All colors used are PMS or the closest CMYK equivalent. If these colors are incorrect, please provide the correct PMS match and a revision to this drawing will be made.	 SIGNS LIGHTING IMAGE	DISTRIBUTED BY SIGN UP COMPANY 700 21st Street Southwest PO Box 210 Watertown, SD 57201-0210 1.800.843.9888 • www.personasigns.com
Location: SALT LAKE CITY, UT	File Name: 165905 - R1 - 3890 SOUTH 1100 EAST - SALT LAKE CITY, UT					

Frame	Hot dip galvanized + anti-graffiti powder coated steel
Brackets	Hot dip galvanized
Panels	Aluminium + anti-graffiti powdercoat
Access fasteners	Security Torx
Media player access	Dual camlock
Eyebolt	Stainless crane on
Baseplate	McDonalds spec triple mounting pattern option

ODMB 02 SINGLE

Displays	Samsung OH55F
Hardware	Stratacache Spectra NG
Heating/Cooling	Watlow 100W Heater Sunon 120mm AC Fan
Power Supply Units	60W DC Media Player Power Supply
Power Cables	1 x IEC Power Cable
Electrical Components	Isolated Ground 2 x IG Receptacles 20A Circuit Breaker
Communication Cables	2 x HDMI 1 x RS232
Certification	UL Certified



SCALE: 1/2" = 1'-0"

ISOMETRIC VIEW
NOT TO SCALE

Customer:
MCDONALD'S

Location:
SALT LAKE CITY, UT

Date:
23MAR18

File Name:
165905 - R1 - 3890 SOUTH 1100 EAST - SALT LAKE CITY, UT

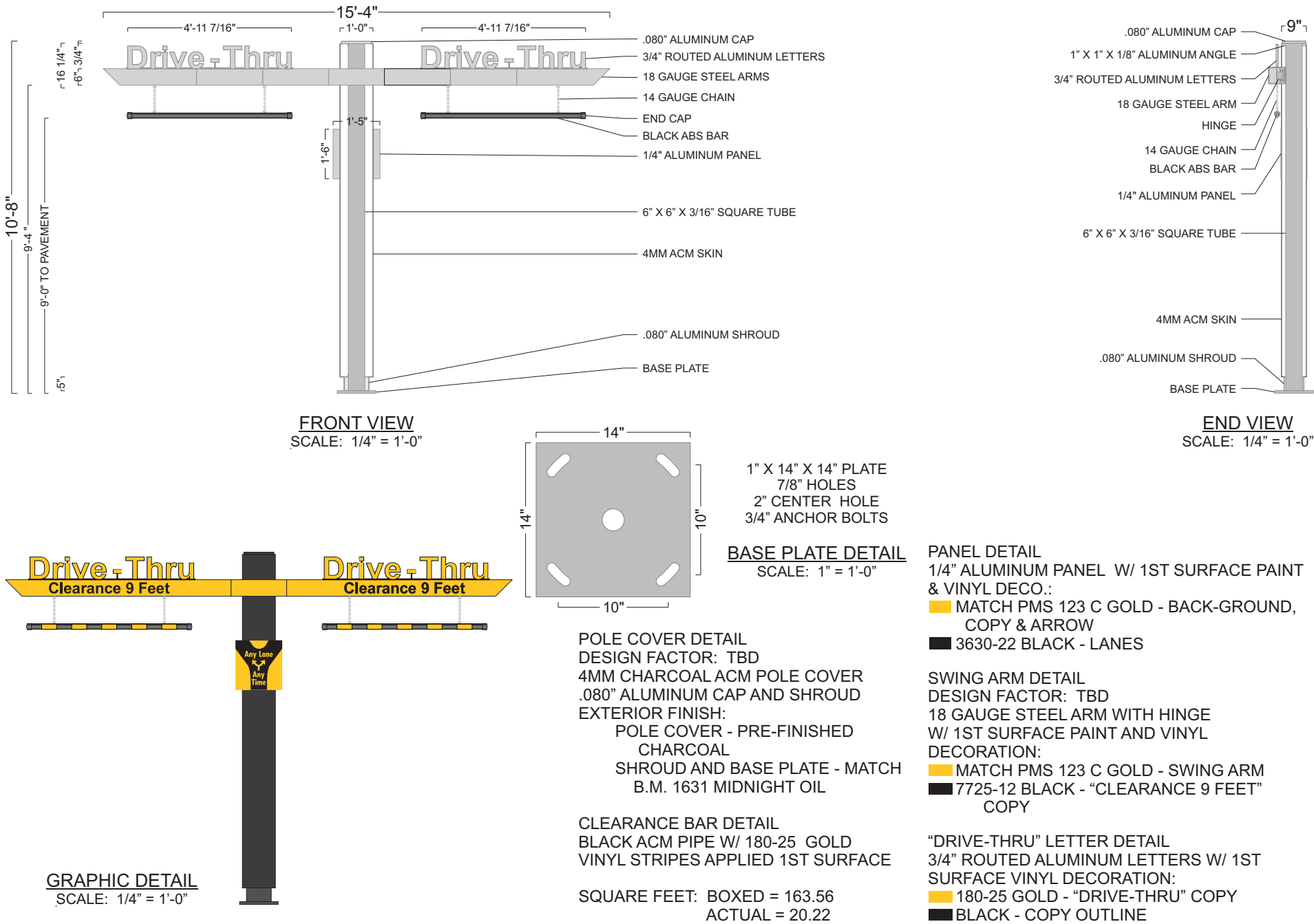
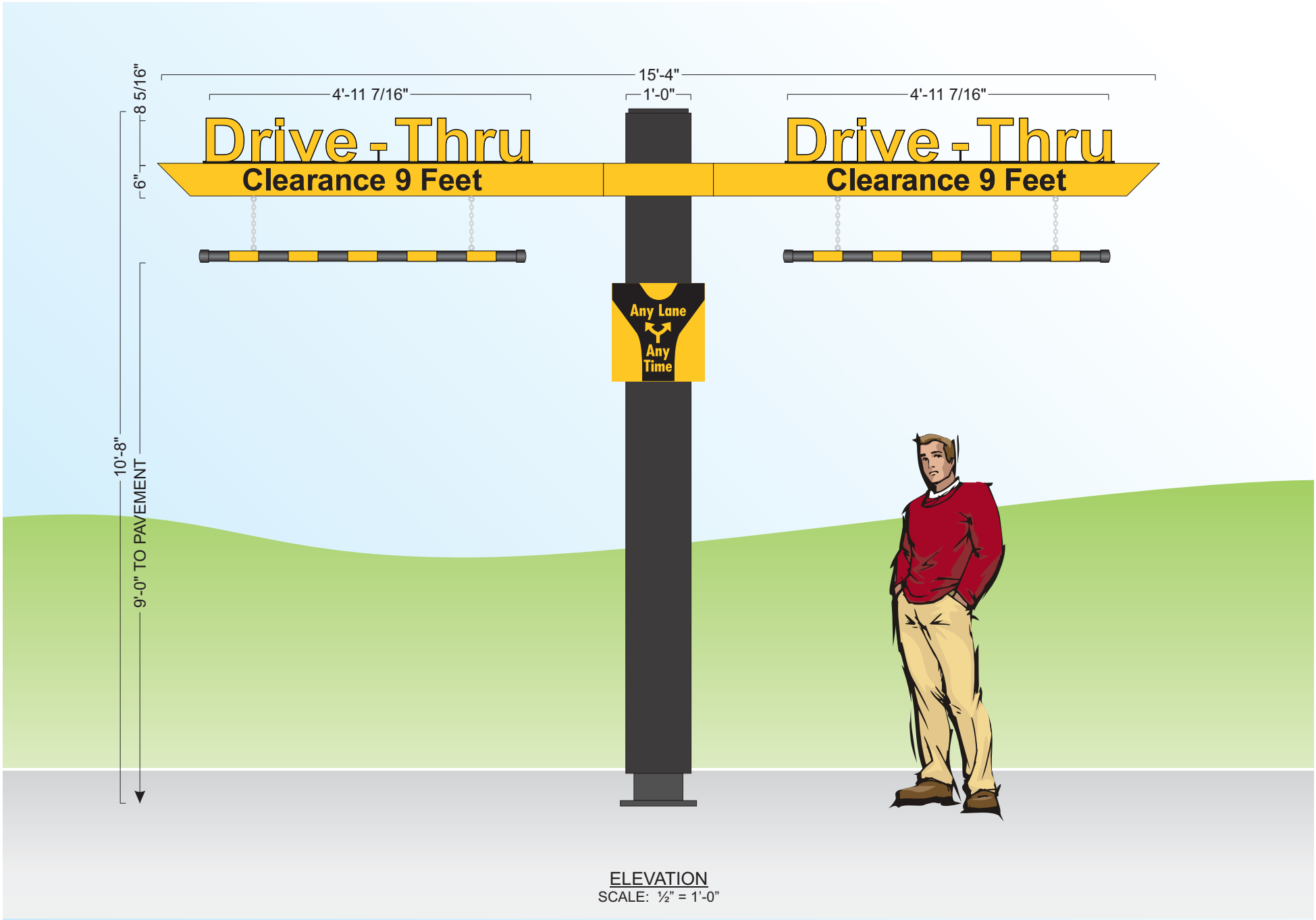
Prepared By:
SC

Note: Color output may not be exact when viewing or printing this drawing. All colors used are PMS or the closest CMYK equivalent. If these colors are incorrect, please provide the correct PMS match and a revision to this drawing will be made.

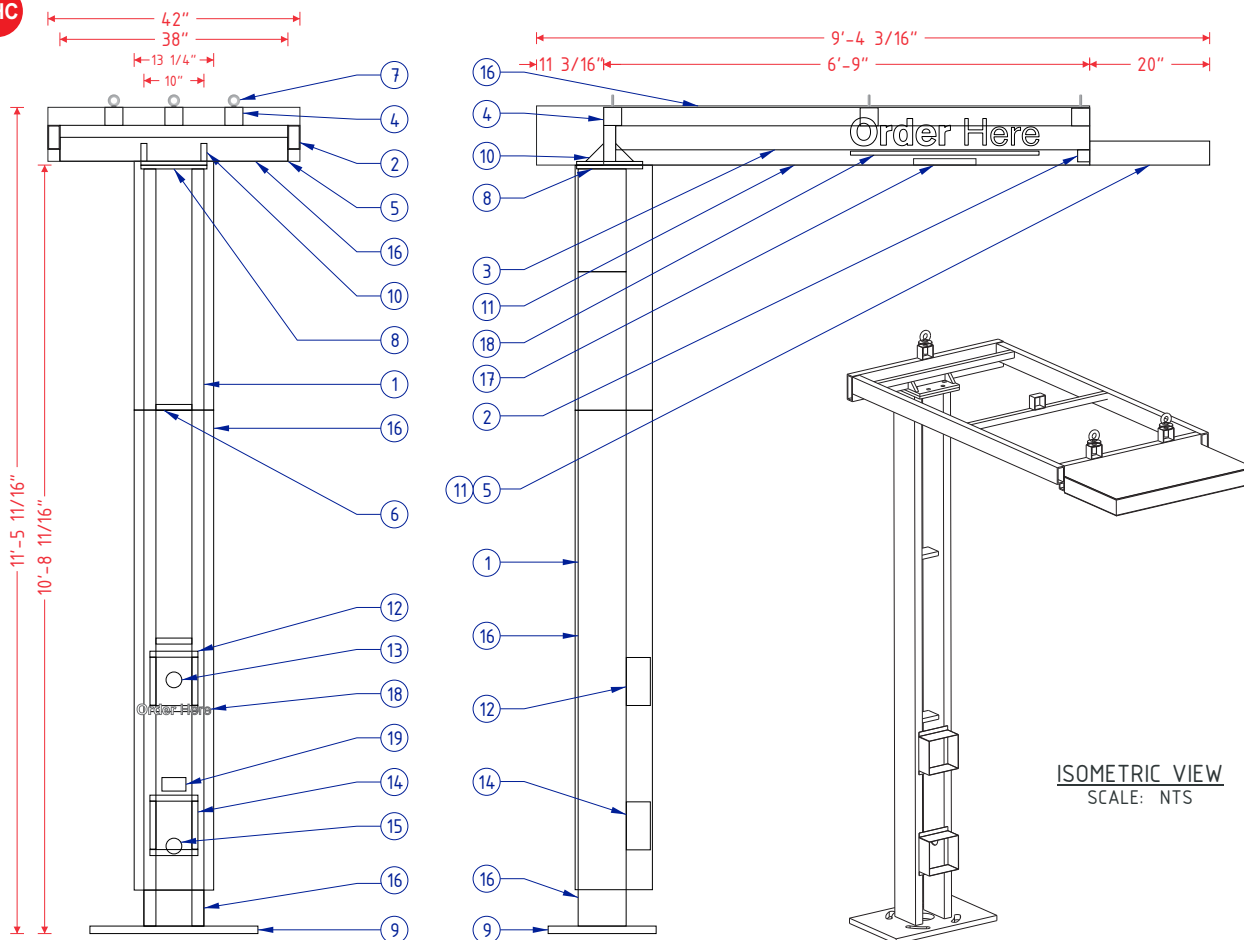
Eng:
-

persōna
SIGNS | LIGHTING | IMAGE

DISTRIBUTED BY SIGN UP COMPANY
700 21st Street Southwest
PO Box 210
Watertown, SD 57201-0210
1.800.843.9888 • www.personasigns.com



OHC



FRAME & LAMP DETAIL

SCALE: 3/8" = 1'-0"

18" X 28" X 1 1/4" PLATE
1 3/8" SLOTTED HOLES
1 1/4" BOLTS

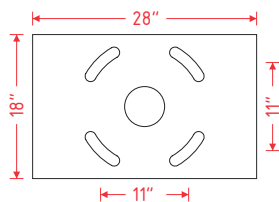


PLATE DETAIL

SCALE: 1/2" = 1'-0"

11" X 11" X 5/8" PLATE
3/4" HOLES
5/8" BOLTS

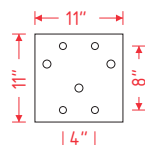


PLATE DETAIL

SCALE: 1/2" = 1'-0"

ISOMETRIC VIEW
SCALE: NTS

Order Here

GRAPHIC DETAIL
SCALE: 3/16" = 1'-0"

MCDONALD'S SPRINGBOARD OHC SPECIFICATIONS

NO.	PART/DESCRIPTION
1	2" X 8" X 3/16" RECTANGULAR TUBE
2	2" X 6" X 1/4" RECTANGULAR TUBE
3	2" X 4" X 1/4" RECTANGULAR TUBE
4	3" X 3" X 3/16" SQUARE TUBE
5	1" X 4" X 1/8" RECTANGULAR TUBE
6	C4 ALUMINUM C-CHANNEL
7	1/2" EYEBOLTS (3)
8	11" X 11" X 5/8" TOP PLATES (2) (SEE PLATE DETAILS)
9	18" X 28" X 1 1/4" BASE PLATE (SEE PLATE DETAILS)
10	3" X 3" X 3/4" GUSSETS
11	.063" ALUMINUM SKIN
12	.063" ALUMINUM BENT SP10 SPEAKER BOX HOLDER
13	SPEAKER OPENING
14	.063" ALUMINUM BENT DM 4/DM 5 MICROPHONE BOX HOLDER
15	MICROPHONE OPENING
16	ACM CLADDING
17	SLOAN LED LIGHT WITH POWER SUPPLY
18	REFLECTIVE WHITE 680-10 VINYL
19	ADA STICKER

NOTES:

- DESIGN FACTOR: TO BE DETERMINED
- 2" X 8" X 3/16 RECTANGULAR TUBE FRAME
- ACM AND .063" ALUMINUM SKIN
- EXTERIOR FINISH:
 - BASE PLATE - PAINT BM 1631 MIDNIGHT OIL
 - TUBE AND TOP ACM - PAINT CHARCOAL
 - SPRINGBOARD TIP AND UNDERSIDE - PAINT PMS 123 C GOLD
- ACM/SKIN REMOVABLE FOR SERVICE
- U.L. LISTED
- ELECTRICAL: 0.64 AMPS/120 VOLTS

Customer:

MCDONALD'S

Date:

23MAR18

Prepared By:

SC

Note: Color output may not be exact when viewing or printing this drawing. All colors used are PMS or the closest CMYK equivalent. If these colors are incorrect, please provide the correct PMS match and a revision to this drawing will be made.

Location:

SALT LAKE CITY, UT

File Name:

165905 - R1 - 3890 SOUTH 1100 EAST - SALT LAKE CITY, UT

Eng:

-

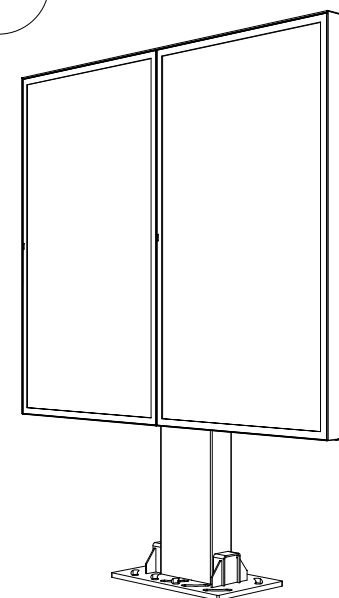
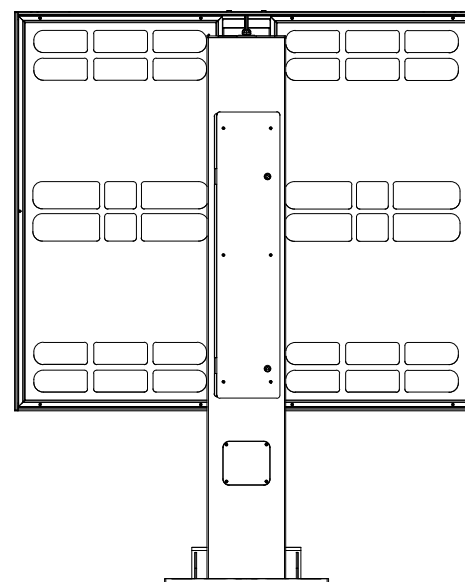
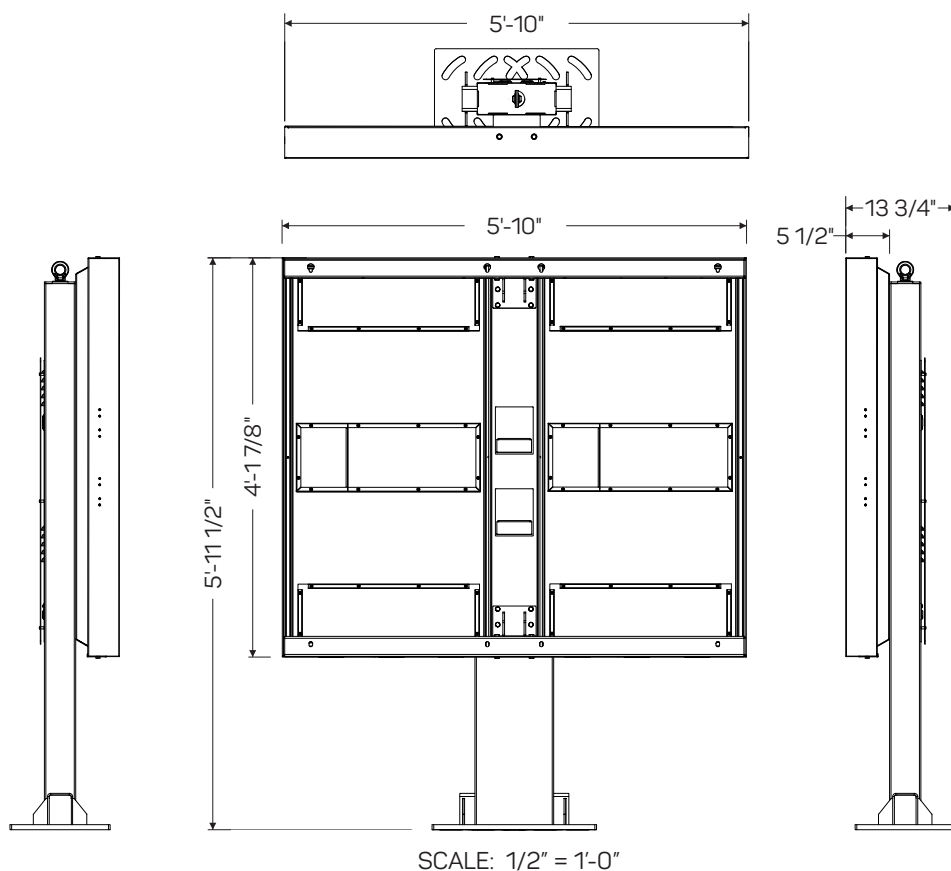
persona
SIGNS | LIGHTING | IMAGE

DISTRIBUTED BY SIGN UP COMPANY
700 21st Street Southwest
PO Box 210
Watertown, SD 57201-0210
1.800.843.9888 • www.personasigns.com

Frame	Hot dip galvanized + anti-graffiti powder coated steel
Brackets	Hot dip galvanized
Panels	Aluminium + anti-graffiti powdercoat
Access fasteners	Security Torx
Media player access	Dual camlock
Eyebolt	Stainless crane on
Baseplate	McDonalds spec triple mounting pattern option

ODMB 02 DOUBLE

Displays	2 x Samsung OH55F
Hardware	2 x Stratacache Spectra NG
Heating/Cooling	Watlow 100W Heater Sunon 120mm AC Fan
Power Supply Units	2 x 60W DC Media Player Power Supply
Power Cables	2 x IEC Power Cables
Electrical Components	Isolated Ground 2 x IG Receptacles 20A Circuit Breaker
Communication Cables	4 x HDMI 2 x RS232
Certification	UL Certified



ISOMETRIC VIEW
NOT TO SCALE

Customer:
MCDONALD'S

Location:
SALT LAKE CITY, UT

Date:
2/14/18

File Name:
165906 - ODMB 02 DOUBLE SOUTH SIDE - SALT LAKE CITY, UT

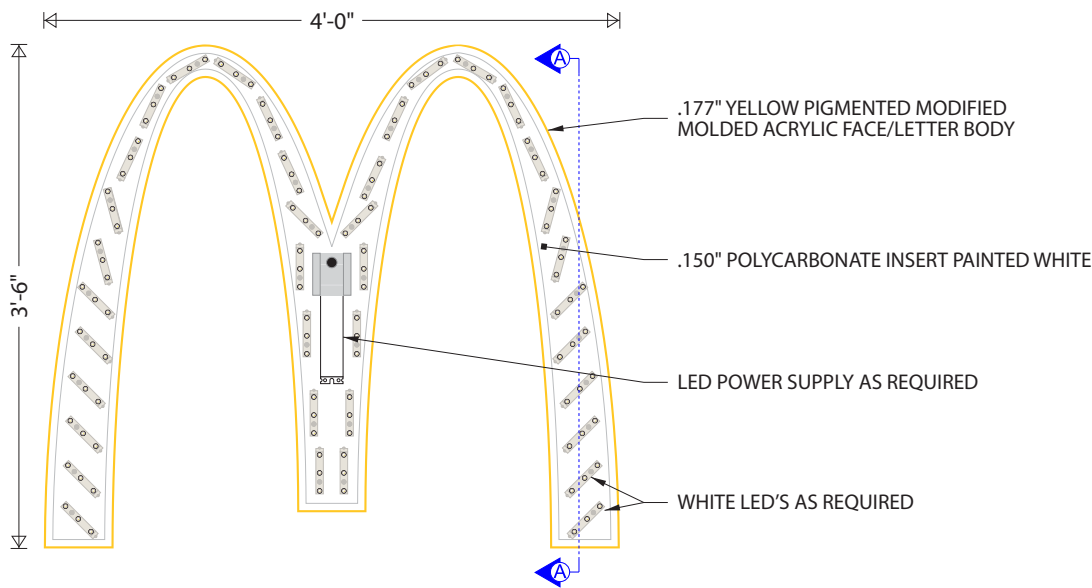
Prepared By:
BKE

Note: Color output may not be exact when viewing or printing this drawing. All colors used are PMS or the closest CMYK equivalent. If these colors are incorrect, please provide the correct PMS match and a revision to this drawing will be made.

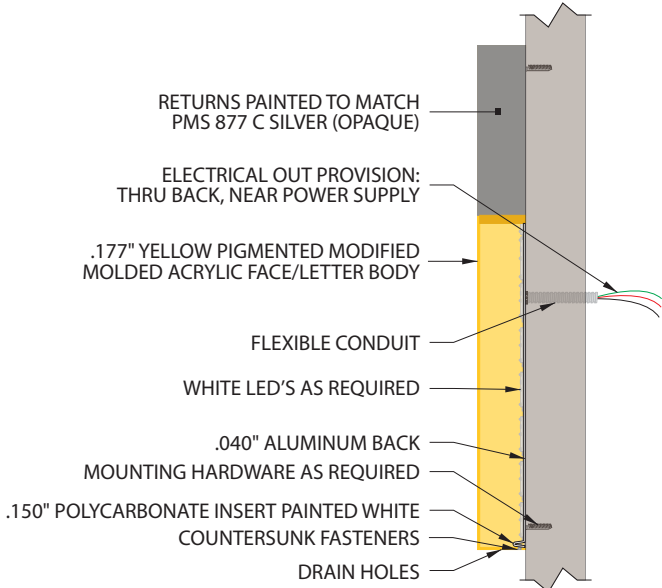
Eng:
-

persona
SIGNS | LIGHTING | IMAGE

DISTRIBUTED BY SIGN UP COMPANY
700 21st Street Southwest
PO Box 210
Watertown, SD 57201-0210
1.800.843.9888 • www.personasigns.com



FRAME & LAMP DETAIL
SCALE: 3/4" = 1'-0"

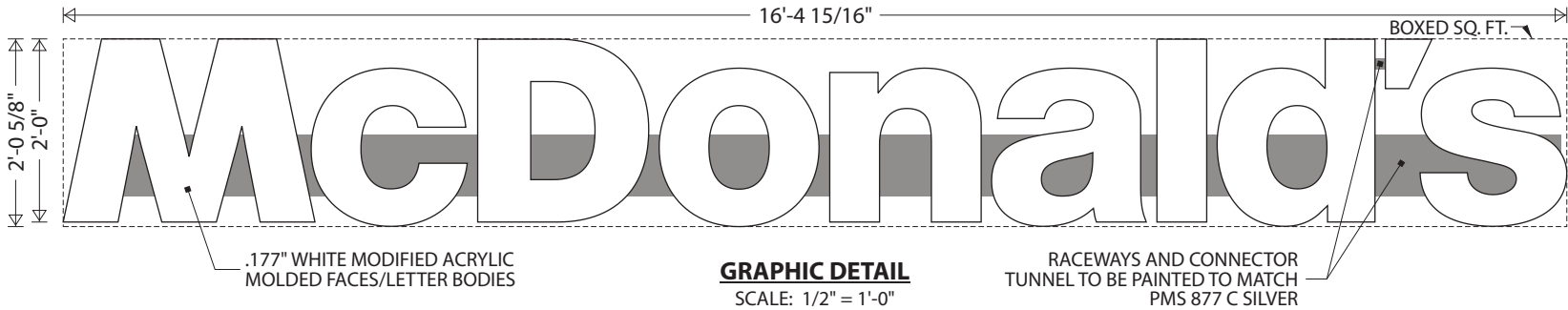


CROSS SECTION A-A
SCALE: 3/4" = 1'-0"



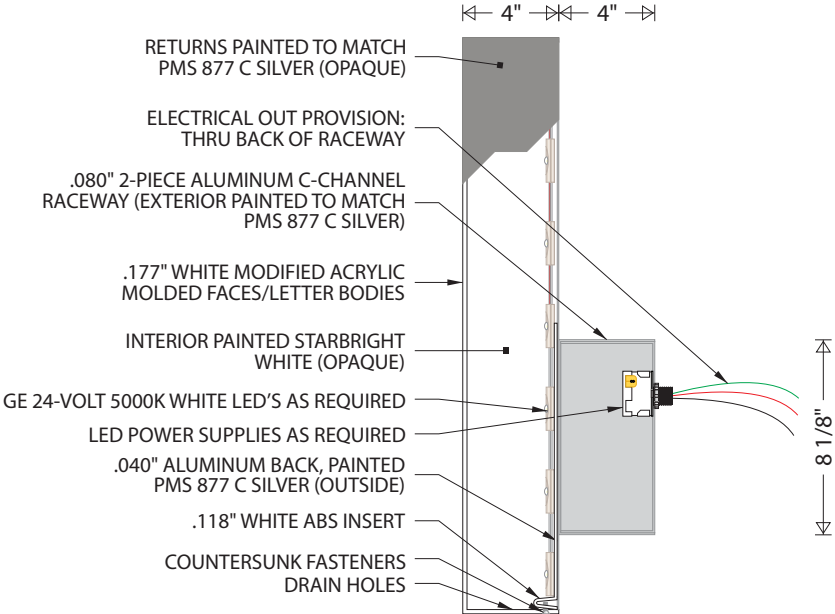
GRAPHIC DETAIL
SCALE: 3/4" = 1'-0"

FRAME DETAIL:
DESIGN FACTOR: TBD
.177" FORMED YELLOW PIGMENTED (PMS 123 C) MODIFIED ACRYLIC FACE/LETTER BODY
EXTERIOR FINISH: PAINTED TO MATCH PMS 877 C SILVER (OPAQUE)
INTERIOR FINISH: PAINTED STARBRIGHT WHITE (OPAQUE)
.150" POLYCARBONATE INSERT PAINTED STAR-BRIGHTWHITE
.040" ALUMINUM BACK
LETTER BODY REMOVABLE FOR SERVICE ACCESS
U.L. APPROVED
ELECTRICAL: 0.85 AMPS, 120 VOLTS
SQUARE FOOTAGE:
BOXED = 14.00
ACTUAL = 4.90



GRAPHIC DETAIL
SCALE: 1/2" = 1'-0"

NOTES:
.177" MOLDED WHITE MODIFIED ACRYLIC LETTER BODIES
INSTALLED ON ALUMINUM BACKS
.118" WHITE ABS INSERTS
EXTERIOR FINISH: MATCH PMS 877 C SILVER (OPAQUE);
BACKS PAINTED PMS 877 C SILVER
INTERIOR FINISH: STAR-BRIGHT WHITE (OPAQUE)
LETTER BODIES REMOVABLE FOR SERVICE ACCESS
ACCESS PANEL BEHIND LETTER "n" FOR RACEWAY ACCESS
U.L. APPROVED
ELECTRICAL: 1.10 AMPS, 120 VOLTS
SQUARE FOOTAGE:
BOXED = 33.38
ACTUAL = 19.53

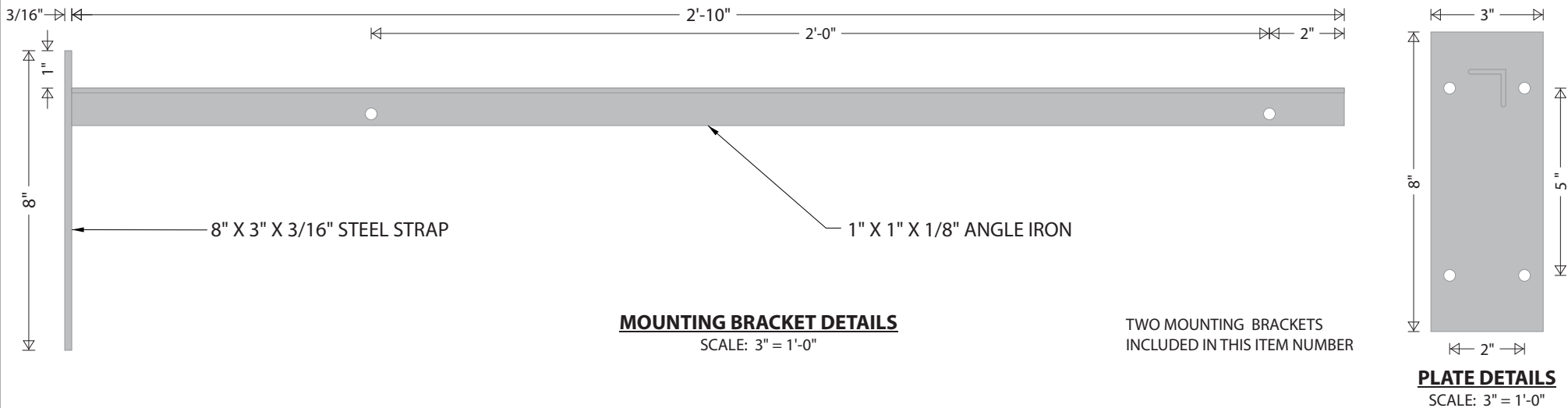


LETTER PROFILE
SCALE: 1 1/2" = 1'-0"



GRAPHIC DETAIL
SCALE: 1 1/2" = 1'-0"

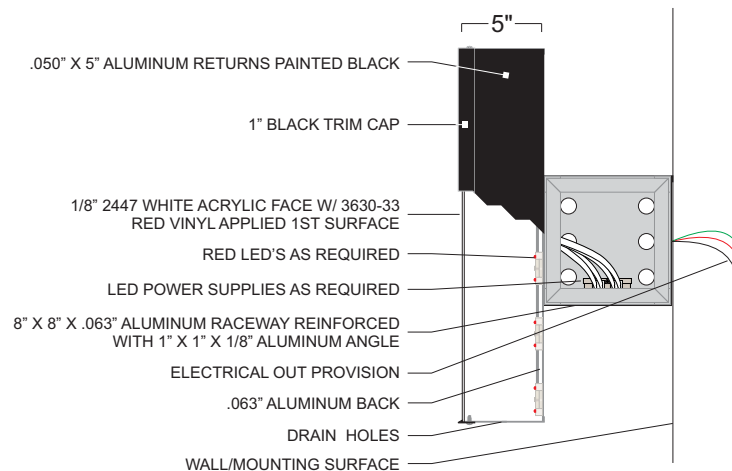
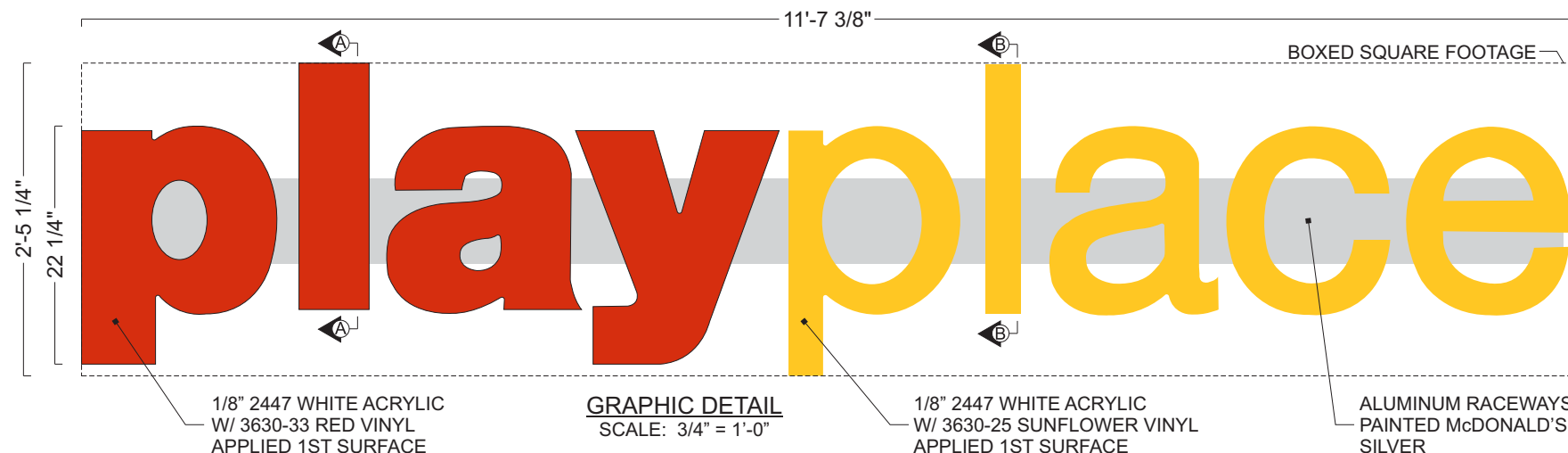
“WELCOME” LETTER DETAILS
3/4” ALUMINUM LETTERS WITH 1ST
SURFACE DECORATION:
7725-120 SILVER - “WELCOME”
COPY
BLACK POWDERCOAT - OUTLINE
SQUARE FOOTAGE: BOXED = 2.54
ACTUAL = 1.18



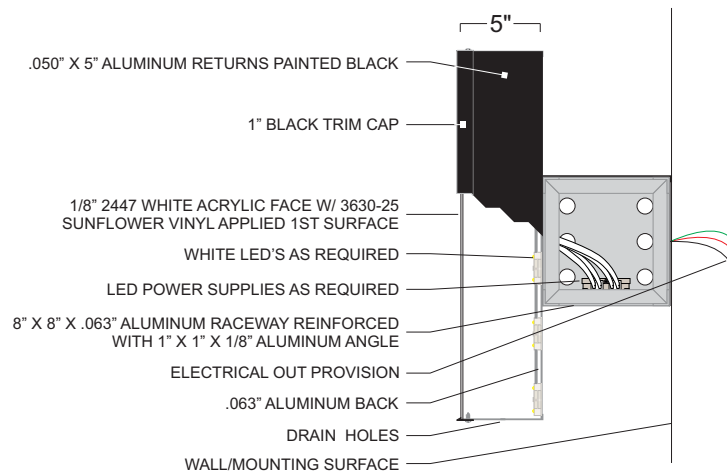
WINDOW POSITION SIGN DETAILS
SCALE: 1 1/2" = 1'-0"

BRACKET DETAILS
DESIGN FACTOR: TBD
3/16" X 3" STEEL STRAP
1" X 1" X 1/8" ANGLE IRON ARM
EXTERIOR FINISH: PAINTED PMS
877 C SILVER
5/16" HOLES PUNCHED IN ANGLE
AND PLATE FOR MOUNTING

WINDOW POSITION SIGNS DETAIL
DESIGN FACTOR: TBD
.150" PIGMENTED PVC BOARD TO
MATCH GREY FORD - MED DK
PLATINUM
WHITE SCREENED COPY 1ST SURFACE
2.50 SQUARE FEET
* BOTH WINDOW POSITION SIGNS
ARE INCLUDED IN THIS ITEM.



CROSS SECTION A-A
SCALE: 1" = 1'-0"



CROSS SECTION B-B
SCALE: 1" = 1'-0"

NOTES:
U.L. APPROVED
ELECTRICAL: 0.85 AMPS, 120 VOLTS
INTERIOR FINISHED REFLECTIVE WHITE
DISCONNECT SWITCH ON RIGHT HAND END OF RACEWAY
SQUARE FOOTAGE: BOXED = 28.31
ACTUAL = 11.31

Customer:
MCDONALD'S

Date:
23MAR18

Prepared By:
SC

Note: Color output may not be exact when viewing or printing this drawing. All colors used are PMS or the closest CMYK equivalent. If these colors are incorrect, please provide the correct PMS match and a revision to this drawing will be made.

Location:
SALT LAKE CITY, UT

File Name:
165905 - R1 - 3890 SOUTH 1100 EAST - SALT LAKE CITY, UT

Eng:
-

persōna
SIGNS | LIGHTING | IMAGE

DISTRIBUTED BY SIGN UP COMPANY
700 21st Street Southwest
PO Box 210
Watertown, SD 57201-0210
1.800.843.9888 • www.personasigns.com