

TYPICAL RECESSED FIXTURE MOUNTING DETAIL

ELECTRICAL SYMBOLS

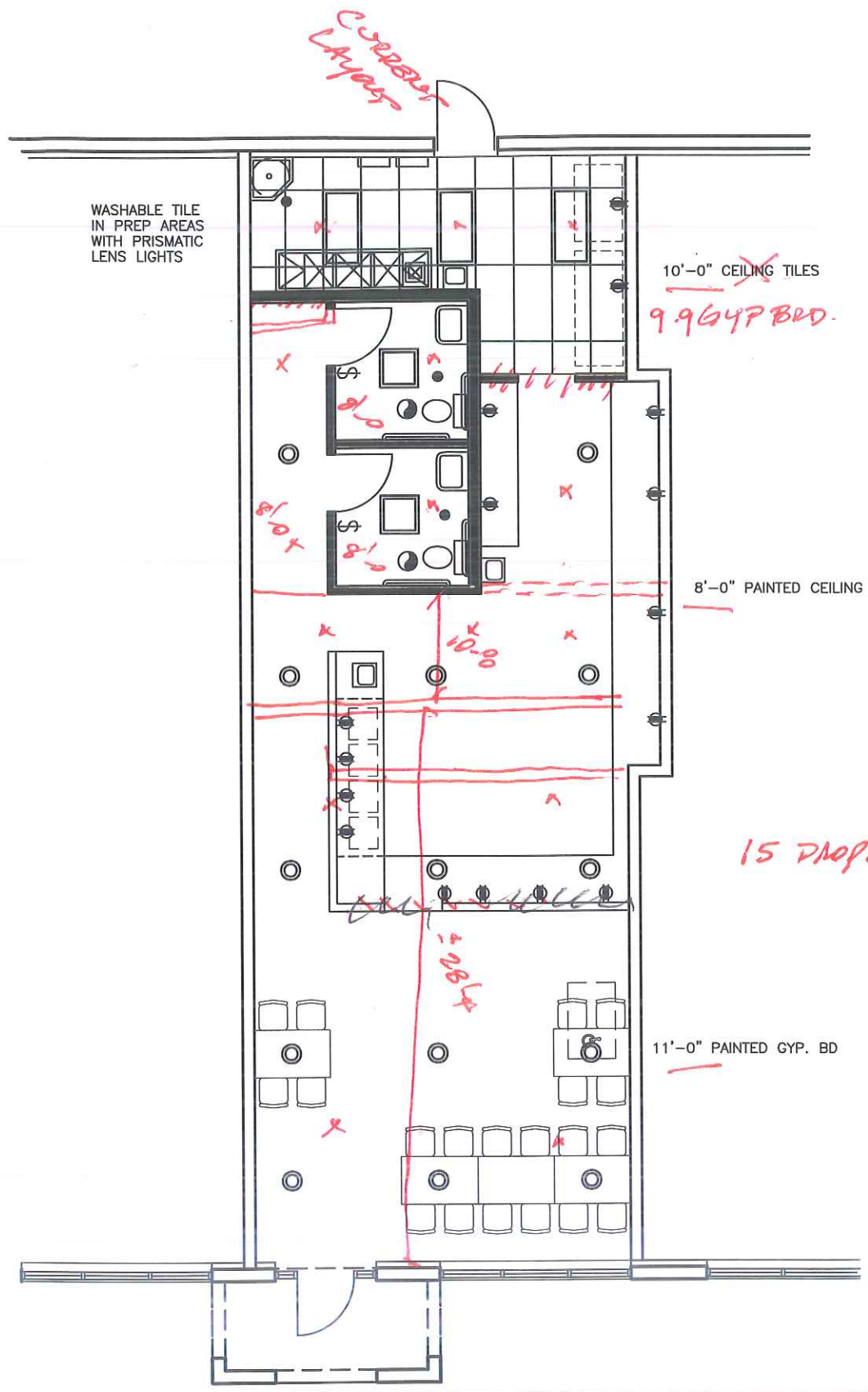
- NEW 2X4 FLUORESCENT LIGHT FIXTURE
PRISMATIC LENS, (3) T-8 LAMPS, 3500 K.
ALTERNATE: 18 CELL PARABOLIC OR RT5 INDIRECT/DIRECT OR L.E.D.
ALL KITCHEN OUTLETS GFI PROTECTED UNLESS NOTED.
- FLUORESCENT LIGHT FIXTURE - PENDANT.
WATTS LESS THAN IECC REPORT. 13 W MIN.
- MECH. DIFFUSERS. MODIFY HVAC AND RELOCATE/ADD
DIFFUSERS AS REQ'D. TITUS TDC - #26 WHITE/WHITE
- THERMOSTAT. PROTECT/RELOCATE/ADD AS REQ'D.
- EXIT SIGN (LIGHTED, WITH BATTERY BACKUP)
- DUPLEX RECEPTACLE OUTLET - +15" TO LOWER OUTLET
- FOURPLEX RECEPTACLE OUTLET - +15" TO LOWER OUTLET
- GFI DUPLEX RECEPTACLE OUTLET - +15" TO LOWER OUTLET
- GFI FOURPLEX RECEPTACLE OUTLET - +15" TO LOWER OUTLET
- 3/4" CONDUIT TO 6" ABOVE CEILING FROM BOX AT 15" A.F.F.
FOR COMPUTER WIRING WITH PLATE.
- 3/4" CONDUIT TO 6" ABOVE CEILING FROM BOX AT 15" A.F.F.
FOR TELEPHONE WIRING WITH PLATE.
- SINGLE POLE SWITCH, CENTER +48" U.N.O.
MODIFY EXISTING LIGHTING CIRCUITS AS REQUIRED FOR PROPER
FUNCTION OF SWITCHES WHERE NEW SPACES OCCUR.

NOTE: (SEE ALSO GENERAL NOTES ON SHEET A0.0)

- NEW CEILING SYSTEM AS SHOWN.
- FIELD DETERMINE CEILING HEIGHT DIMENSION
TO COORDINATE WITH NEW CONSTRUCTION
- ALL RECEPTACLES AND PLATES TO BE WHITE.
- GENERAL CONTRACTOR TO COORDINATE WITH
ELECTRICAL AND CEILING CONTRACTORS TO
INSURE ADEQUATE SPACE FOR INSTALLATION OF
ALL LIGHT FIXTURES IN CEILING SYSTEM.
- VISUAL ALARMS ARE NOT REQUIRED IN
ALTERATIONS, EXCEPT WHERE AN EXISTING
FIRE ALARM SYSTEM IS UPGRADED OR
REPLACED, OR A NEW FIRE ALARM SYSTEM IS
INSTALLED. (2015 IBC 907.5.2.3 EXCEPTION 1)
WHERE NEW FIRE ALARM SYSTEMS ARE
REQUIRED, UPGRADED OR REPLACED; OR
WHERE A VISUAL ALARM SYSTEM EXISTS;
PROVIDE VISUAL ALARMS WHERE REQUIRED
WITHIN THE SPACE IN ACCORDANCE WITH
2015 IBC 907.5.2.3. INSTALL PER
ICC/ANSI A117.1-2009. UPDATE AND
RELOCATE EXISTING ALARMS AS REQUIRED.
PROVIDE VISUAL ALARMS IN PUBLIC AND
COMMON AREAS, SUCH AS RESTROOMS,
CONF. ROOMS, RECEPTION AND CORRIDORS.
ALARMS TO BE WHITE EXCEPT WHERE MATCHING.
NOT IN BASE BID.
- CONTRACTOR TO FIELD DETERMINED ELECTRICAL
PANEL CAPACITY PRIOR TO BID, FOR INSTALLING
NEW LIGHT FIXTURES AND ELECTRICAL POWER
REQ. FOR PROJECT.
- ALL DEVICES SHALL BE 20 AMP. SPEC. GRADE
MINIMUM.

ALL ELECTRICAL AND MECHANICAL SHOWN ARE
FOR INFORMATION AND LOCATION ONLY. CONTRACTOR
SHALL FIELD DETERMINE ALL LOCATIONS AND LOADS
PRIOR TO INSTALLATION.
ALL ELECTRICAL AND MECHANICAL WORK TO
MEET LATEST CODE REQUIREMENTS.

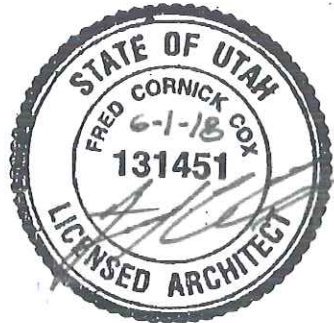
NOTE:
ANY SPACE REQUIRING TWO
EXTERIOR EXITS SHALL HAVE
EXIT SIGNS AND EMERGENCY
LIGHTING (BATTERY BALLASTS)



Fred C. Cox,
Architect
4466 Early Duke St.
West Valley City,
Utah 84120-5723

Phone: 801-968-3733
Fax: 801-966-3778
Email: fcc@fredccox.com

THIS DOCUMENT IS FOR CLIENT APPROVAL
OF THE PROJECT NOTED AND IS ALSO FOR
CONSTRUCTION. ACTUAL SITE DIMENSIONS
COULD VARY. USE OF THIS DOCUMENT FOR
ANY OTHER PROJECT IS NOT PERMITTED.



D-BAR ICE CREAM

3432 SOUTH STATE STREET
SOUTH SALT LAKE, UTAH

CEILING AND POWER PLAN

SCALE: 1/8" = 1'-0"

JUNE 20, 2018
172003-A21-F820

