



**Fire Suppression Services Incorporated**  
3802 South 2300 East, Millcreek, UT 84109.  
Ph (801) 277-6464 Fax (801) 278-2199 Toll Free (800)

Quote  
Division-28

FSS-28TK

## Humane Society Murray

To: **Estimating Department**

### Bid Proposal

For: Fire Suppression Alarm Systems Division 28 Electronic Safety and Security

Bid Number: 1.00  
Date: 2020-01-27  
Expires: 2020-02-11 15 days

Project: **Humane Society Device change out**

Total Price: **\$3,200.00** (estimated)

Quote by: Zach Hagblom (801) 277-6464 for **Fire Suppression Services Incorporated**

This Proposal supersedes, cancels and withdraws all previous submissions

### References:

- NFPA 13: Installation of Sprinkler Systems.
- NFPA 72: National Fire Alarm Code.
- NFPA 170: Standard for Fire Safety and Emergency Symbols.
- Incorporated into this document are other NFPA Codes as referenced and where applicable.
- Ref: [http://www.nfpa.org/aboutthecodes/list\\_of\\_codes\\_and\\_standards.asp](http://www.nfpa.org/aboutthecodes/list_of_codes_and_standards.asp)
- EN 12845: Fixed firefighting systems, Automatic sprinkler systems, Design, installation and maintenance where applicable.
- International Fire & Building Code/s and Life Safety Code.

We use the above codes as a reference ONLY. All and every facets of each of the above may not apply to this proposed pricing document.

### Summary

This proposal is to change out 23 horn strobes and replace with strobe-only devices thorough out the animal area, at the Humane Society 4242 S 300 W. Murray, in accordance with approved Drawings, Calculations and Permits, and all addendums as released as of 2020-01-20

### Inclusions

1. The submission of proposed changes for approval to Murray AHJ, (Submittals) and
2. Obtain Permits from the local Authority Having Jurisdiction over the Project to begin work.
  - 2.1. (Permit set) in consultation with Murray Fire Marshal
3. Change devices out per the attached drawing as per mutually approved locations.
4. The supply & installation of:
  - 4.1. All Parts & materials for this change which consists of:
    - 4.1.1. Twenty two System-Sensor SCRL strobe only devices (22)
5. Proofing:



**Fire Suppression Services Incorporated**  
3802 South 2300 East, Millcreek, UT 84109.  
Ph (801) 277-6464 Fax (801) 278-2199 Toll Free (800)

**Quote  
Division-28**

**FSS-28TK**

**Humane Society  
Murray**

- 5.1. Inspecting work pertaining to this portion of the change-out,
- 5.2. Test the System which includes
  - 5.2.1. Final fire inspection with AHJ if required (1)
  - 5.2.2. Supply final fire inspection report to FSS PM (1)
  - 5.2.3. Supply Certificate of Completion report to FSS PM & General/Owner and AHJ

**Exclusions**

HV supply and wiring back to a dedicated breaker at the electrical panel (125 vac)

**Additional Charges**

- **Note:** Remote Monitoring Services. Can be supplied by **Fire Suppression Services Inc.** A separate quote is attached.

**Notes to Owner/Architect**

**Communications:**

Owner or General is to supply one only Point-of-Contact email address for document delivery. FSS will send emails to that address only. It will be your responsibility to manage your internal distribution. Fire Suppression Services Inc. reserves the right to communicate, at any & all times, with the Owner of the property. Neither the Contractor nor the Owner shall be permitted to give instructions or orders directly to this subcontractor's employees or the subcontractors sub-contractors or material suppliers unless such persons are designated as authorized representatives of Fire Suppression Services Inc.

**Other notes:**

Owner/Architect/Engineer of Record to supply all CAD base drawings for Arch. Civil, Site (Utilities) & MEP DWG files are to include Floor Plans, Reflected Ceiling Plans, Building Sections, Structural Plans, Mechanical (HVAC) Plans and Civil (Utility) Plans.

The Contractor shall permit this subcontractor (Fire Suppression Services inc.) to request directly from the Architect information regarding percentages of completion and the amount certified on account of Work done by this subcontractor.

Design will be based on design parameters provided by Fire Suppression Services and Architect or Engineer. The Contractor shall promptly make available to this subcontractor information, including information from the Owner, that affects this subcontract and that becomes available to the Contractor subsequent to execution of our Contract.

It is Owner's responsibility to supply 120 VAC 15-20 Amp, dedicated circuit with dedicated ground wiring and connectivity to building fire alarm panels, Compressors and pumps back to electrical breakers. Put it in the scope of work of the Division 26 Electrical. **Fire Suppression Services Inc.** technicians are not High Voltage AC electricians.

Owner is to supply, at Owners expense, Quality 110-125 AC site power to FSS site work space, in accordance with local Code in readiness for site fitters/technicians at FSS Mobilization, through to our Demobilizations. (For AWP charging and Rigid™ Thread cutters etc.)



**Fire Suppression Services Incorporated**  
3802 South 2300 East, Millcreek, UT 84109.  
Ph (801) 277-6464 Fax (801) 278-2199 Toll Free (800)

Quote  
Division-28  
**Humane Society  
Murray**

**FSS-28TK**

Owner will be required to have off-site alarm monitoring by a remote service, of all alarms. (By Code, it must be in place at Final Test). **Fire Suppression Services Inc.** can supply this service on request as follows:

For Wireless service \$720 for the first twelve (12) months, or

- You may elect to have your own dedicated non-voicemail landline and we supply the monitoring service for \$660.00 for the twelve (12) months

If Owner chooses not to use wireless dialer, then Cat-6 phone lines will be run from De-Marc to Fire Panel. YOU must supply dial tone before finals. (No voicemail. The 'stutter' interferes with line-seizure). (We will do the termination at the panel) (We will do the termination at the panel)

Owner to advise alarm technicians when sprinkler division has completed Riser main and main & subsidiary FDC tamper switches are installed.

Owner may add additional exit pull-stations for an additional fee.

## Addenda

**These addenda are our TERMS & CONDITIONS and are incorporated into the Proposal in its entirety.**

### BILLING & PAYMENT

All our Requests for Payment (billing) will be submitted per AIA docs "G702 Application for Progress Payment" using the AIA G703 "Continuation Sheet" "Schedule of Values". The Progress Payment you make is part of an Invoice that represents the full amount of the Contract. We use ONE Master Invoice number for the project. Your payments are progress payments against this invoice. IF we issue YOU this Invoice, then: ALL invoice amounts (the full Contract Amount), on this invoice are Net 15, no exception. FSS will register the job with the Utah State Construction Service and will at all times preserve its lien rights. Property Owner will be notified and a lien placed on the property if amounts due are unpaid after 30 days from the application for payment date.

### BOND (ADDITIONAL CHARGE)

If requested, **Fire Suppression Services Inc.** shall furnish Bonds in the form requested by you, the 'Owner', covering the faithful performance of the Agreement, and the payment of all obligations arising there under. These may be in the form of 100% Performance, 100% Labor and Material Payment, and Lien Bonds.

The FULL cost of providing such Bond/s for you, the Owner and/or his Agent/Contractor shall be paid by you, the Owner/Agent/Contractor or whosoever may require **Fire Suppression Services Inc.** to furnish said Bond/s, and is an additional cost/amount, and IS NOT included in this bid.

Any and all payments required by **Fire Suppression Services Inc.** for the above shall be shown on any Breakout Sheet (e.g.: AIA-G703) as a SEPARATE item list and shall NOT be subject to any "retainage".

This Subcontractor shall be reimbursed, without any retainage, for the cost of any required performance or payment bonds simultaneously with the FIRST progress payment.

### CHANGES, CCO & PCO

All fire sprinkler nozzles and/or pipe-work AND All Hood Systems and their Suppression devices

AND: All Chemical Suppression Systems AND Portable Extinguishers AND: All Alarm Systems, will be installed as per approved Plans; Any change or deviations from said Plans will not be done without approved Change Order/s with attendant cost adjustments.

### CONTRACT

Seller objects to modifications and additions to any of the terms of this document, irrespective of the wording of the Purchasers acceptance, or other Purchaser Forms, Purchasers Contract, other Documents or hand written annotations on this Document. This document in its entirety is to be incorporated into 'The Contract' with you.

### FREIGHT

All goods that attract freight are FOB Origin FC.

### LABOR

Labor is calculated at a regular day rate and will be performed during business hours. (08:00-16:30) or (07:00-15:30) Hours outside these, or weekends are additional charge to you at time and one half, without exception & must be approved via CO, before worked.

### MOBILIZATION-DEMOLIBILIZATION-REMOBILIZATION

If Fire Suppression Services Inc. or its subcontractors have to suspend work, for any reason, and have to demobilize before completion, then we are entitled to recover our demobilization costs from you; and, if **Fire Suppression Services Inc.** and/or its subcontractors have to remobilize we are entitled to recover the remobilization costs from you.



**Fire Suppression Services Incorporated**  
3802 South 2300 East, Millcreek, UT 84109.  
Ph (801) 277-6464 Fax (801) 278-2199 Toll Free (800)

Quote  
Division-28  
**Humane Society  
Murray**

**FSS-28TK**

**PERMIT, DESIGNS and SUBMITTALS**

Any and all payments required by **Fire Suppression Service Inc.** for Permit, Designs & Submittals shall be shown on any Breakout Sheet (e.g.: AIA-G703) as a SEPARATE item list and shall NOT be subject to any "retainage".

**Prices & Taxes**

If Seller is required to pay any taxes or other fees relating to the services to be performed or to the production, sale or transportation of goods, Purchaser will reimburse the Seller for any such taxes or fees. Portable Fire Extinguishers attract Utah Sales Tax.

**You agree to pay all outstanding Statement amounts, and all interest, attorney's fees and collection costs.**

**Right of Way**

Fire Suppression Services requires first right of way; this means that Fire Suppression Sprinkler Technician/Fitters "must be First & High".

**Tamper**

Tampering or Adjusting or Working on Fire Suppression installed and tagged Systems by anyone other than Fire Suppressions Authorized personnel or Certified /Authorized / Licensed Fire Protection Service Personnel not only jeopardizes the safe and correct operation of the equipment; it voids the tags on said System, voids all **FSS** Warranties, and it is highly likely it will affect your Insurance.

Unless your maintenance department personnel are so authorized, it is advisable to leave the System equipment maintenance and servicing to Certified Personnel.

**Asbestos Notice:**

**FIRE SUPPRESSION SERVICES Inc. IS NEITHER FORMALLY LICENSED IN THE REMOVAL OF, NOR THE ANALYSIS OF ASBESTOS. OUR COMPANY WILL THEREFORE NOT NORMALLY DEAL WITH ALL ASBESTOS RELATED INCIDENTS IN A PRACTICAL SENSE ON BEHALF OF OUR CLIENTS. WHEN THE PRESENCE OF ASBESTOS IS SUSPECTED WE WILL STOP WORK AND APPOINT COMPETENT AND ACCREDITED SUB CONTRACTORS ON A SITE-SPECIFIC BASIS TO CARRY OUT ANY REMOVALS OR TEST**

2016-08-19



**From: Fire Suppression Services Inc. (801 277-6464)**  
**For: Humane Society 4242 S. 300 W. Murray**

## SCRL

### Product Images



Model:

SCRL

Type:

Strobes; AV

L-Series, red, ceiling-mountable, clear lens, strobe marked "FIRE". Selectable strobe settings: 15, 30, 75, 95, 115, 150, and 177 cd.

### Product Documentation / Drawings

[Brochure: AV L-Series Products](#)

[Data Sheet: L-Series: Strobes ...](#)

[Drawing Files: L-Series: Strobe...](#)

[Engineering Spec: L-Series: En...](#)

[Product Manual: L-Series: Hor...](#)

### Accessories

#### Required

There are no required accessories for this product.

#### Optional



#### BZRC

The L-Series BZRC is a red bezel for ceiling mount strobes and horn-strobes. When ordering indicate ...



#### LENS-A2

L-Series, amber lens, used for any indoor wall-mountable strobes.



#### LENS-B2

L-Series, blue lens, used for any indoor wall-mountable strobes.



#### LENS-G2

L-Series, green lens, used for any indoor wall-mountable strobes.



#### LENS-R2

L-Series, red lens, used for any indoor wall-mountable strobes.



#### MP120KL

The L-Series MP120KL mounting plate is designed to use 120 VAC to power L-Series horns, strobes, hor...



### SBBCLR

L-Series, red, ceiling surface-mountable back box.



### TRC-2

L-Series, red, ceiling-mountable, trim ring that provides additional space in backbox.

## Specifications

Candela	Selectable strobe settings of 15, 30, 75, 95, 115, 150, and 177 cd
Ceiling Mount Dimensions:	6.8" diameter x 2.5" high (173 mm diameter x 64 mm high)
Color	Red
DC Max Op Current	(see Data Sheet for complete current draw information)
FWR Max Op Current	(see Data Sheet for complete current draw information)
Location	Indoor
Marking	FIRE
Maximum Humidity	10 to 93% non-condensing
Mounting	Ceiling
Operating Temperature	32°F to 120°F (-0°C to 49°C)
Operating Voltage Range	8 to 17.5 V (12V nominal) or 16 to 33 V (24 nominal)
Series	L-Series
Voltage	Regulated 12DC/FWR or regulated 24DC/FWR
Wiring Gauge	12 to 18 AWG

## Agency Links





## Indoor Selectable-Output Strobes and Horn Strobes for Ceiling Applications

*System Sensor L-Series audible visible notification products are rich with features guaranteed to cut installation times and maximize profits with lower current draw and modern aesthetics.*

### Features

- Plug-in design with minimal intrusion into the back box
- Tamper-resistant construction
- Automatic selection of 12- or 24-volt operation at 15 and 30 candela
- Field-selectable candela settings on ceiling units: 15, 30, 75, 95, 115, 150, and 177
- Horn rated at 88+ dBA at 16 volts
- Rotary switch for horn tone and two volume selections
- Universal mounting plate for ceiling units
- Mounting plate shorting spring feature checks wiring continuity before device installation
- Electrically Compatible with legacy SpectrAlert and SpectrAlert Advance devices
- Compatible with MDL3 sync module
- Listed for ceiling mounting only



**The System Sensor L-Series** offers the most versatile and easy-to-use line of horns, strobes, and horn strobes in the industry with lower current draws and modern aesthetics. With white and red plastic housings, wall and ceiling mounting options, System Sensor L-Series can meet virtually any application requirement.

The entire L-Series product line of ceiling-mount strobes and horn strobes include a variety of features that increase their application versatility while simplifying installation. All devices feature a plug-in design with minimal intrusion into the back box, making installations fast and foolproof while virtually eliminating costly and time-consuming ground faults.

To further simplify installation, the L-Series utilizes a universal mounting plate so installers can mount them to a wide array of back boxes. With an onboard shorting spring, installers can test wiring continuity before the device is installed.

Installers can also easily adapt devices to a suit a wide range of application requirements using field-selectable candela settings, automatic selection of 12- or 24-volt operation, and a rotary switch for horn tones with two volume selections.

### Agency Listings



## L-Series Specifications

### Architect/Engineer Specifications

#### General

L-Series ceiling-mount strobes and horn strobes shall mount to a standard 4 × 4 × 1½-inch back box, 4-inch octagon back box, or double-gang back box. Two-wire products shall also mount to a single-gang 2 × 4 × 17/8-inch back box. A universal mounting plate shall be used for mounting ceiling and wall products. The notification appliance circuit wiring shall terminate at the universal mounting plate. Also, L-Series products, when used with the Sync•Circuit™ Module accessory, shall be powered from a non-coded notification appliance circuit output and shall operate on a nominal 12 or 24 volts. When used with the Sync•Circuit Module, 12-volt-rated notification appliance circuit outputs shall operate between 8.5 and 17.5 volts; 24-volt-rated notification appliance circuit outputs shall operate between 16.5 and 33 volts. Indoor L-Series products shall operate between 32 and 120 degrees Fahrenheit from a regulated DC or full-wave rectified unfiltered power supply. Ceiling strobes and horn strobes shall have field-selectable candela settings including 15, 30, 75, 95, 115, 150, and 177.

#### Strobe

The strobe shall be a System Sensor L-Series Model **SCRL** listed to UL 1971 and shall be approved for fire protective service. The strobe shall be wired as a primary-signaling notification appliance and comply with the Americans with Disabilities Act requirements for visible signaling appliances, flashing at 1 Hz over the strobe's entire operating voltage range. The strobe light shall consist of a xenon flash tube and associated lens/reflector system.

#### Horn Strobe Combination

The horn strobe shall be a System Sensor L-Series Model \_\_\_\_\_ listed to UL 1971 and UL 464 and shall be approved for fire protective service. The horn strobe shall be wired as a primary-signaling notification appliance and comply with the Americans with Disabilities Act requirements for visible signaling appliances, flashing at 1 Hz over the strobe's entire operating voltage range. The strobe light shall consist of a xenon flash tube and associated lens/reflector system. The horn shall have two audibility options and an option to switch between a temporal three pattern and a non-temporal (continuous) pattern. These options are set by a multiple position switch. The horn on horn strobe models shall operate on a coded or non-coded power supply.

#### Synchronization Module

The module shall be a System Sensor Sync•Circuit model MDL3 listed to UL 464 and shall be approved for fire protective service. The module shall synchronize L-Series strobes at 1 Hz and horns at temporal three. Also, while operating the strobes, the module shall silence the horns on horn strobe models over a single pair of wires. The module shall mount to a 4 11/16 × 4 11/16 × 2 1/8-inch back box. The module shall also control two Style Y (class B) circuits or one Style Z (class A) circuit. The module shall synchronize multiple zones. Daisy chaining two or more synchronization modules together will synchronize all the zones they control. The module shall not operate on a coded power supply.

### Physical/Electrical Specifications

<b>Standard Operating Temperature</b>	32°F to 120°F (0°C to 49°C)
<b>Humidity Range</b>	10 to 93% non-condensing
<b>Strobe Flash Rate</b>	1 flash per second
<b>Nominal Voltage</b>	Regulated 12 VDC or regulated 24 DC/FWR <sup>1</sup>
<b>Operating Voltage Range<sup>2</sup></b>	8 to 17.5 V (12 V nominal) or 16 to 33 V (24 V nominal)
<b>Operating Voltage Range (MDL3)</b>	8.5 to 17.5V (12 V nominal) or 16.5 to 33 V (24V nominal)
<b>Input Terminal Wire Gauge</b>	12 to 18 AWG
<b>Ceiling-Mount Dimensions (including lens)</b>	6.8" diameter × 2.5" high (173 mm diameter × 64 mm high)
<b>Ceiling-Mount Surface Mount Back Box Skirt Dimensions (SBBCL, SBBCLW)</b>	6.9" diameter × 3.4" high (175 mm diameter × 86 mm high)

#### Notes:

1. Full Wave Rectified (FWR) voltage is a non-regulated, time-varying power source that is used on some power supply and panel outputs.
2. P, S, PC, and SC products will operate at 12 V nominal only for 15 and 30 cd.



## UL Current Draw Data

UL Max. Strobe Current Draw (mA RMS)				
	Candela	8–17.5 Volts	16–33 Volts	FWR
		DC	DC	
<b>Candela Range</b>	15	87	41	60
	30	153	63	86
	75	N/A	111	142
	95	N/A	134	164
	115	N/A	158	191
	150	N/A	189	228
	177	N/A	226	264

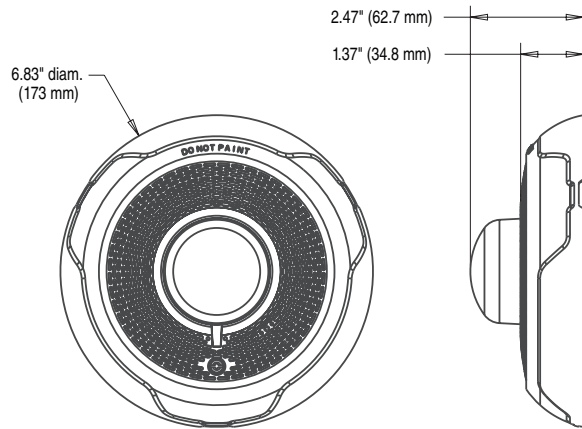
UL Max. Horn Current Draw (mA RMS)				
Sound Pattern	dB	8–17.5 Volts	16–33 Volts	FWR
		DC	DC	
Temporal	High	39	44	54
Temporal	Low	28	32	54
Non-Temporal	High	43	47	54
Non-Temporal	Low	29	32	54
3.1 KHz Temporal	High	39	41	54
3.1 KHz Temporal	Low	29	32	54
3.1 KHz Non-Temporal	High	42	43	54
3.1 KHz Non-Temporal	Low	28	29	54
Coded	High	43	47	54
3.1 KHz Coded	High	42	43	54

UL Max. Current Draw (mA RMS), Ceiling Horn Strobe, Candela Range (15–177 cd)									
DC Input	8–17.5 Volts		16–33 Volts		75cd	95cd	115cd	150cd	177cd
	15cd	30cd	15cd	30cd					
Temporal High	103	167	71	90	143	165	187	217	254
Temporal Low	96	165	54	71	137	161	185	211	249
Non-Temporal High	106	173	71	90	141	165	187	230	273
Non-Temporal Low	95	166	54	71	124	161	170	216	258
3.1K Temporal High	111	164	69	94	147	163	184	229	257
3.1K Temporal Low	103	163	54	88	143	155	185	212	252
3.1K Non-Temporal High	111	172	69	94	144	164	202	229	271
3.1K Non-Temporal Low	103	169	54	88	131	155	187	217	259
FWR Input	16–33 Volts				75cd	95cd	115cd	150cd	177cd
	15cd	30cd	75cd	95cd					
Temporal High	107	135	179	198	223	254	286		
Temporal Low	78	101	151	172	199	229	262		
Non-Temporal High	107	135	179	198	223	254	286		
Non-Temporal Low	78	101	151	172	199	229	262		
3.1K Temporal High	108	135	179	200	225	255	289		
3.1K Temporal Low	79	101	150	171	196	229	260		
3.1K Non-Temporal High	108	135	179	200	225	255	289		
3.1K Non-Temporal Low	79	101	150	171	196	229	260		

## Horn Strobe Tones and Sound Output Data

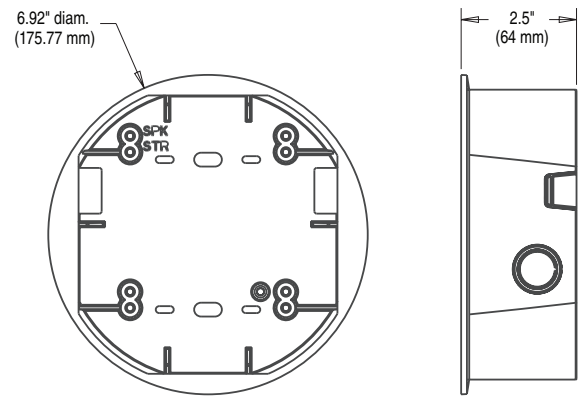
Horn Strobe Output (dBA)					
Switch Position	Sound Pattern	dB	8–17.5 Volts	16–33 Volts	FWR
			DC	DC	
1	Temporal	High	84	89	89
2	Temporal	Low	75	83	83
3	Non-Temporal	High	85	90	90
4	Non-Temporal	Low	76	84	84
5	3.1 KHz Temporal	High	83	88	88
6	3.1 KHz Temporal	Low	76	82	82
7	3.1 KHz Non-Temporal	High	84	89	89
8	3.1 KHz Non-Temporal	Low	77	83	83

## L-Series Dimensions



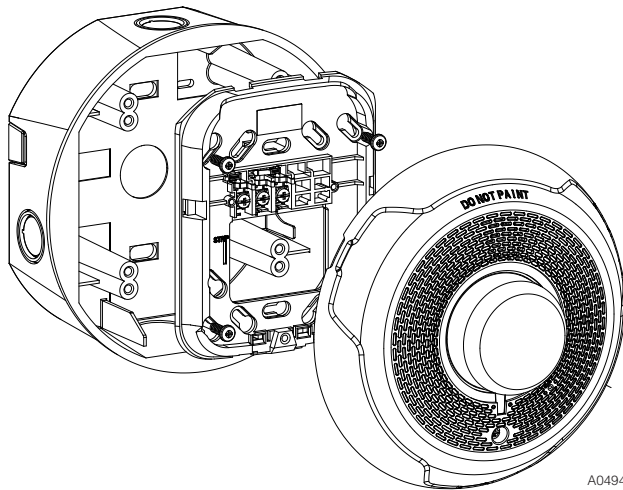
**Ceiling-Mount Horn Strobes**

A0545-00



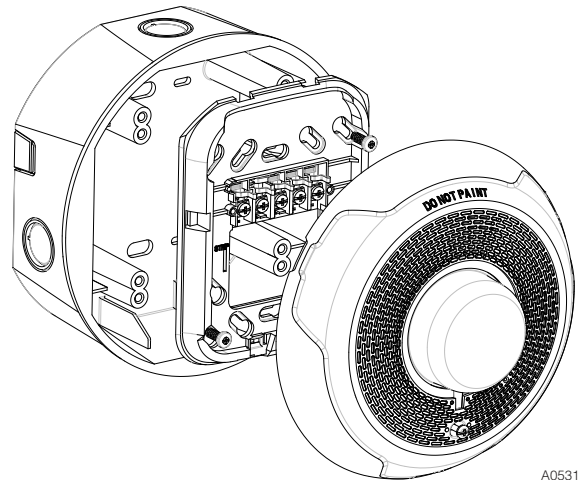
**Ceiling Surface Mount Back Box**

A0546-00



**2-Wire Ceiling Mount Horn Strobes  
with Ceiling Surface Mount Back Box**

A0494-01



**4-Wire Ceiling Mount Horn Strobes  
with Ceiling Surface Mount Back Box**

A0531-01

## L-Series Ordering Information

Model	Description
<b>Ceiling Horn Strobes</b>	
PC2RL	2-Wire, Horn Strobe, Red
PC2WL	2-Wire, Horn Strobe, White
PC4RL	4-Wire, Horn Strobe, Red
PC4WL	4-Wire, Horn Strobe, White

Model	Description
<b>Ceiling Strobes</b>	
SCRL	Strobe, Red
SCWL	Strobe, White
SCWL-CLR-ALERT	Strobe, White, ALERT
<b>Accessories</b>	
TRC-2	Universal Ceiling Trim Ring Red
TRC-2W	Universal Ceiling Trim Ring White
SBBCRL	Ceiling Surface Mount Back Box, Red
SBBCWL	Ceiling Surface Mount Back Box, White

For a ceiling-listed horn-only device, see AVDS865 "Indoor Selectable-Output Horns, Strobes, and Horn Strobes for Wall Applications".

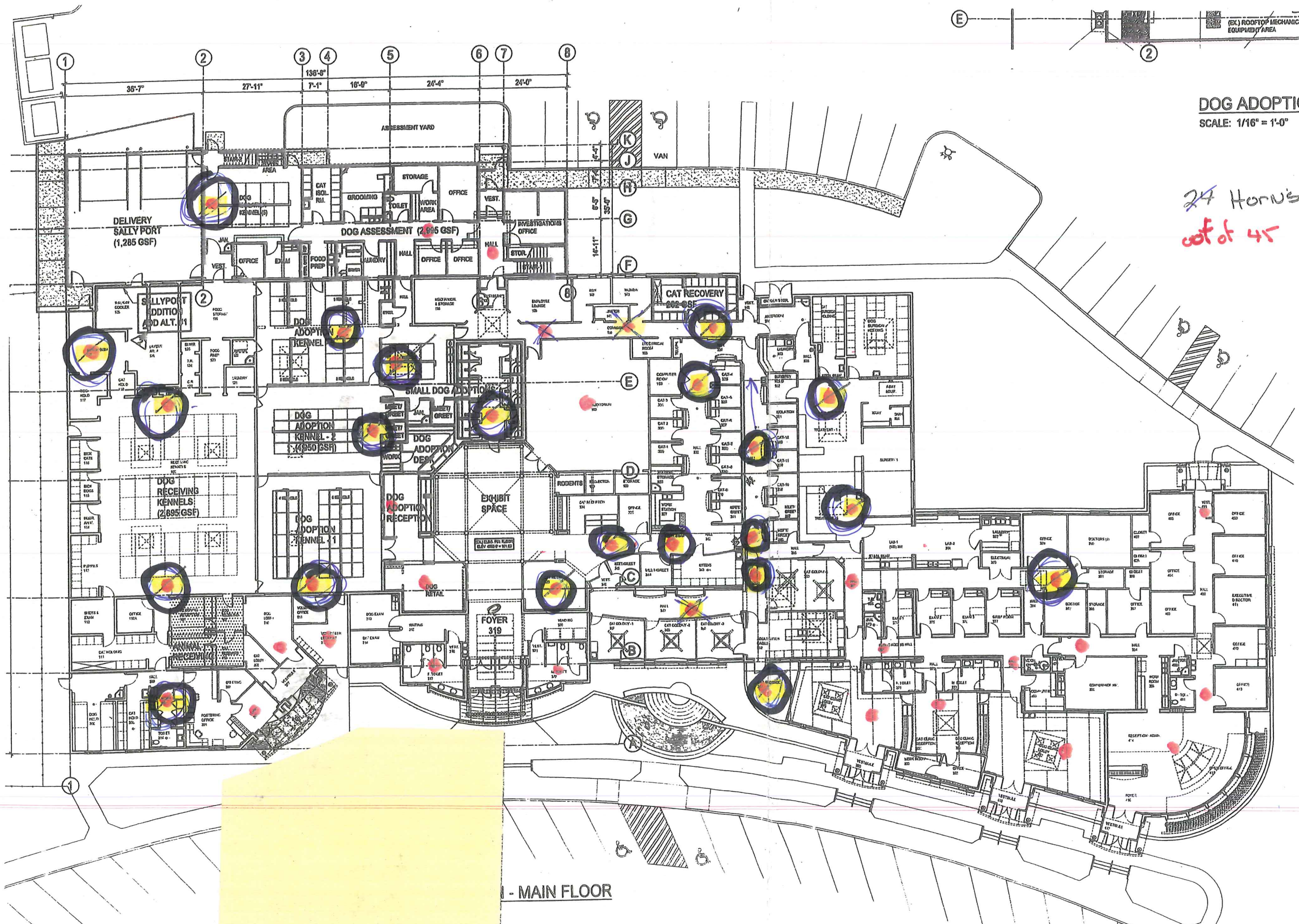


3825 Ohio Avenue • St. Charles, IL 60174  
 Phone: 800-SENSOR2 • Fax: 630-377-6495

©2017 System Sensor.  
 Product specifications subject to change without notice. Visit [systemsensor.com](http://systemsensor.com)  
 for current product information, including the latest version of this data sheet.  
 AVDS868-02 • 12/01/2017



Stroke



DOG ADOPTION  
SCALE: 1/16" = 1'-0"

24 Horns Ø 22  
cot of 45

642 -  
59/10 x 12 = 708

- MAIN FLOOR

ANIMAL AREA - SILENCE ALARMS

- REQUESTED BY JULI, PAULINE & AMEE