

E

D

C

B

A

1

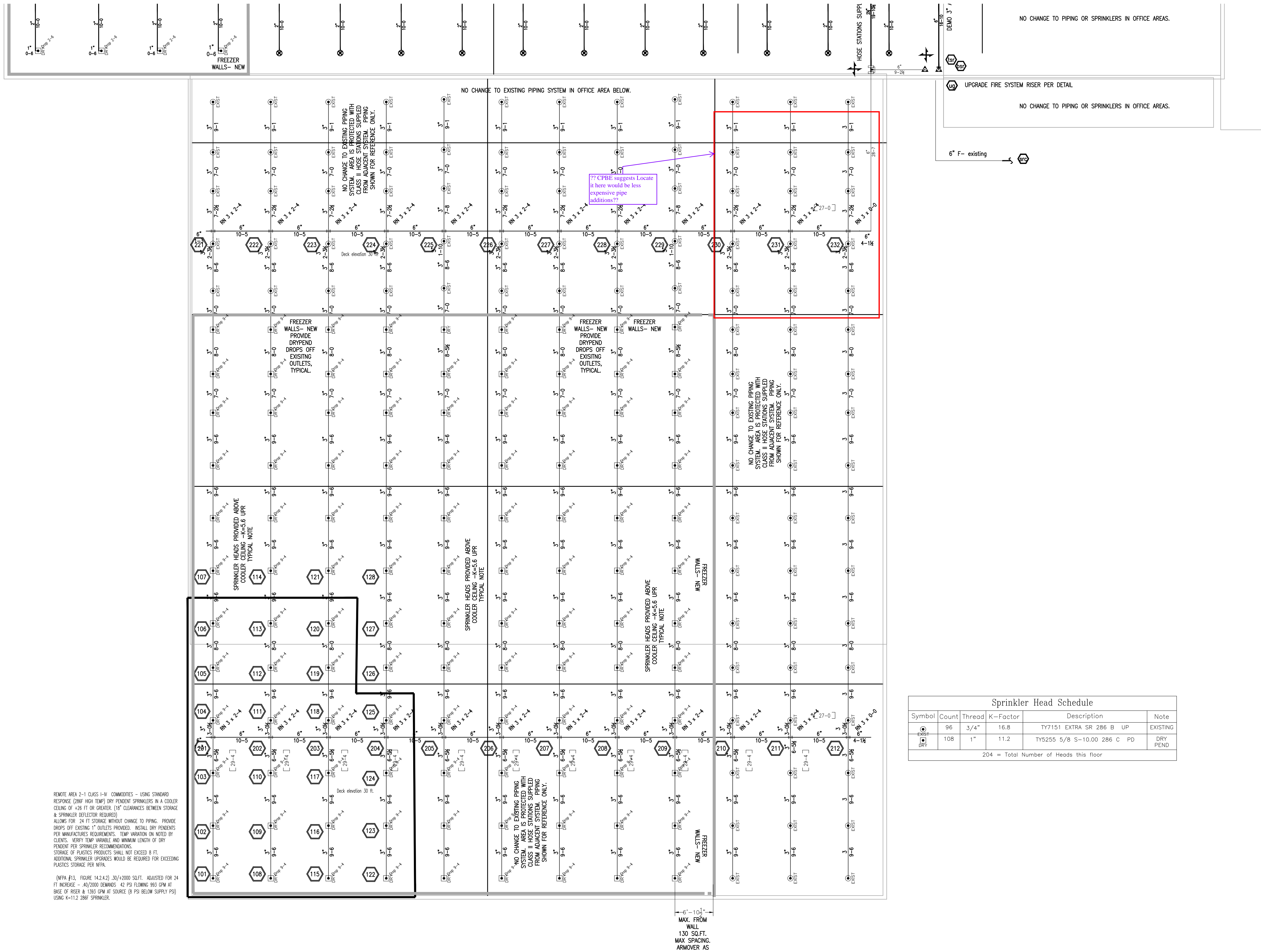
2

3

4

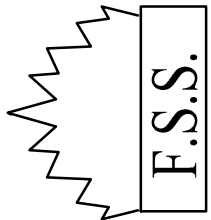
5

6



GENERAL NOTES

1. FIRE SPRINKLER SYSTEM MODIFICATIONS SHALL BE INSTALLED IN ACCORDANCE WITH NFPA 13, 2010 ED., INSTALLATION OF SPRINKLER SYSTEMS.
2. FITTINGS SHALL BE INSTALLED IN ACCORDANCE WITH MANUFACTURERS LISTING REQUIREMENTS.
3. PIPE ROUTING, ELEVATIONS, SPRINKLER LOCATIONS, & DIMENSIONS ARE SCHEMATIC, AND SHALL BE USED AS REFERENCE ONLY. INSTALLER SHALL FIELD VERIFY CONDITIONS, AND PROVIDE OFFSETS AS REQUIRED FOR INSTALLATION. DEVIATION FROM SCHEMATIC PLAN SHALL BE APPROVED IN WRITING BY THE DESIGNER, PRIOR TO INSTALLATION.
4. SUBSTITUTION OF SPRINKLERS AND OTHER DEVICES SHALL BE OF EQUAL SPRINKLERS, VALVES, FITTINGS, PIPE, HANGERS AND OTHER MISC. DEVICES SHALL BE UL LISTED.
5. ALL SPRINKLER ARMOVERS, & DROPS SHALL BE CUT IN FIELD, USING 1" PIPE, TYPICAL.
6. CONNECTION TO EXISTING PIPING SYSTEM MAY USE MECHANICAL TEES AS NEEDED FOR ADDITIONAL OUTLETS.
7. CONTRACTORS STARTING POINT IS AT EXISTING SPRINKLER SYSTEM PIPING.
8. SCOPE OF WORK: MODIFY EXISTING WET SYSTEM IN SOUTH WAREHOUSE. HIGH PILE STORAGE AREAS. PER NFPA 313, 14.2.4.2 24 FT MAX STORAGE, CLASS IV COMMODITIES. 18" CLEARANCE BELOW SPRINKLER SHALL BE PROVIDED. UPGRADE SYSTEM RISER PER DETAIL.
9. IT IS THE OWNERS RESPONSIBILITY TO MAINTAIN A MINIMUM 40°F THROUGHOUT SPACES CONTAINING WET SPRINKLER PIPE. UNLESS OTHERWISE NOTED ENTIRE BUILDING IS CONSIDER A HEATED SPACE.

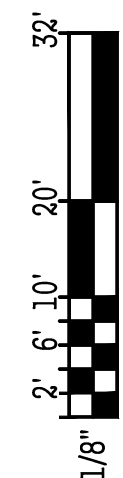


Fire Suppression Services, Inc.

3802 South 2300 East
Salt Lake City, UT 84109
OFFICE 801-277-6464, Fax 278-2199

CAPITAL TRADING WAREHOUSE
FIRE SUPPRESSION UPGRADE

4122 SOUTH 500 WEST
MURRAY, UT



REVISIONS
ASBUILT- 12-5-13

PROJECT # 633
DRAWN BY: FSDG
ISSUE DATE: 6/20/13

SHEET CONTENTS

SOUTH WAREHOUSE
FIRE SPRINKLER
UPGRADE- PLAN

F102

RECORD DRAWING ADVISORY

This record drawing has been prepared, in part, based upon information furnished by others. While this information is believed to be reliable, the ENGINEERS & ARCHITECTS cannot assure its accuracy, and thus are not responsible for the accuracy of this record drawing or for any errors or omissions which may have been incorporated into it as a result. Those relying on this record document are advised to obtain independent verification of its accuracy before applying it for any purpose.