

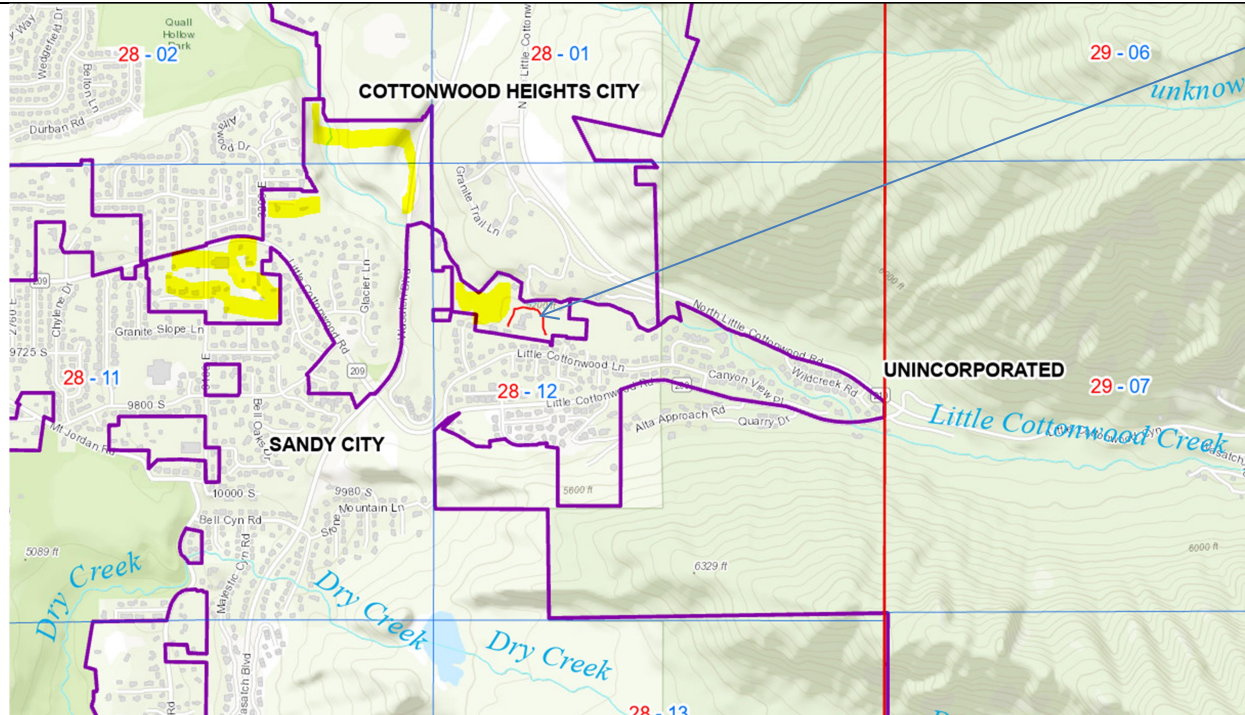


La Caille Un-Incorporated

ED

Fire Suppression Services Incorporated

3802 South 2300 East, Millcreek, UT 84109. Ph (801) 277-6464



UNINCORPORATED La Caille property, the 'red surround I drew around the building. Sandy Fire would 'ATTEND'

Yellow hi-lites are unincorporated with any 'City', so are under the Salt Lake County. "They are little islands, not associated with any city."

2020-11-17 11:20. Spoke with Julie (office mgr) in Milestone; she should talk with Dave today to check where they're permitting. Purple lines are city boundaries.

From Sandy Water PU:

When a 10 inch water line is looped, then we could get:

- 3200 psi with 40 psi remaining.
 - Static pressure is 130 psi.

When there's no looped line, you could only get

- 2400 gpm at 30 psi.
 - static pressure is 110 psi.

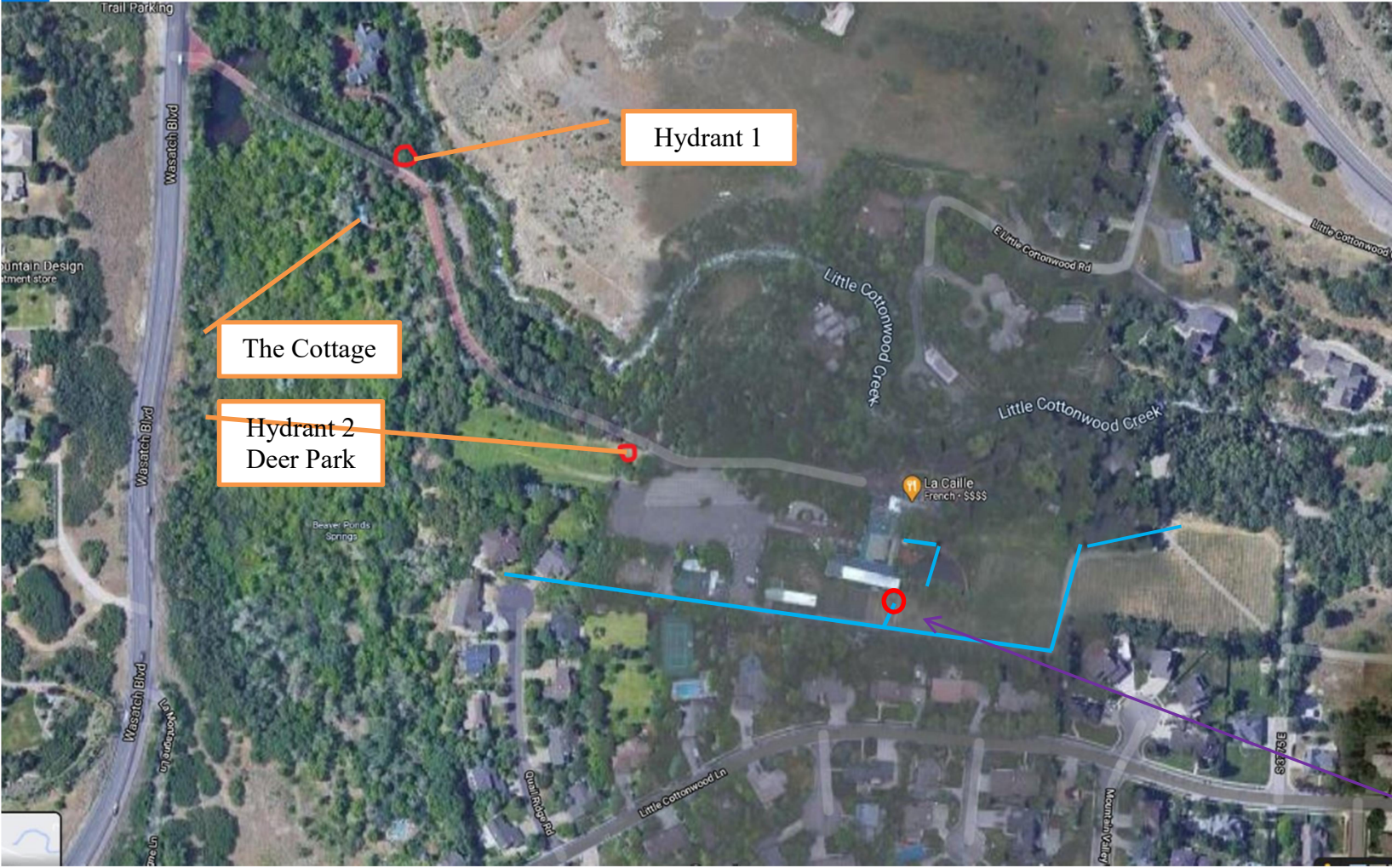


La Caille
Un-Incorporated

ED

Fire Suppression Services Incorporated
3802 South 2300 East, Millcreek, UT 84109. Ph (801) 277-6464

HYDRANTS





La Caille Un-Incorporated

ED

Fire Suppression Services Incorporated

3802 South 2300 East, Millcreek. UT 84109. Ph (801) 277-6464



Hydrant 2. On the right, by the flame, in the 'Deer Park'



La Caille
Un-Incorporated

ED

Fire Suppression Services Incorporated
3802 South 2300 East, Millcreek, UT 84109. Ph (801) 277-6464



Hydrant 1. Opposite 'The Cottage'



La Caille
Un-Incorporated

ED

Fire Suppression Services Incorporated
3802 South 2300 East, Millcreek. UT 84109. Ph (801) 277-6464



The cottage hydrant 1



La Caille
Un-Incorporated

ED

Fire Suppression Services Incorporated
3802 South 2300 East, Millcreek, UT 84109. Ph (801) 277-6464



The Deer Park Hydrant 2